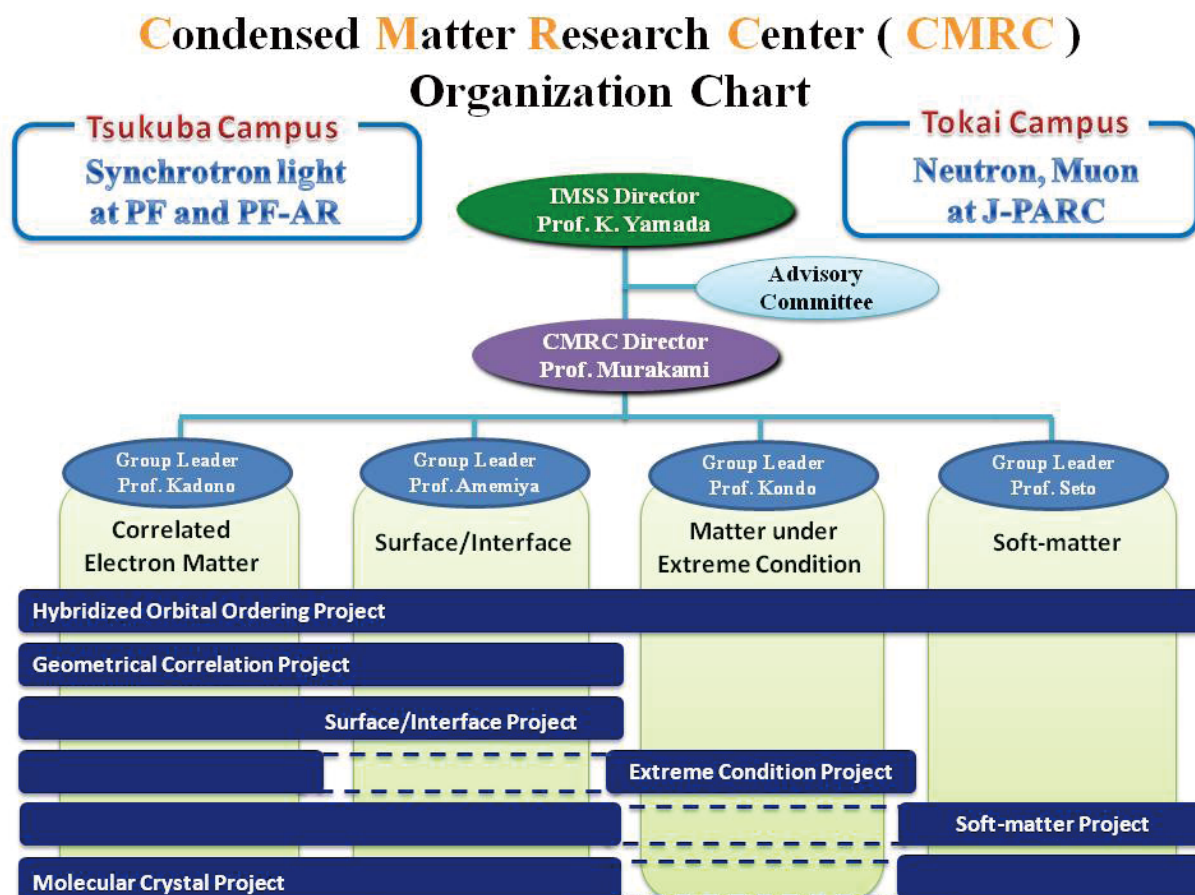


# Organization

## 1. Organization Chart



## 2. Project Member

<Correlated Electron Matter Group>

- Hybridized Orbital Ordering Project

NAKAO Hironori ( KEK )

MURAKAMI Youichi ( KEK )

YAMASAKI Yuichi ( KEK )

OKAMOTO Jun ( KEK )

YAMAKI Yuki ( Tohoku Univ. )

AMEMIYA Kenta ( KEK )

KADONO Ryosuke ( KEK )

KODA Akihiro ( KEK )

KAMIYAMA Takashi ( KEK )

ITO Shinichi ( KEK )

YOKOO Tetsuya ( KEK )

YAMADA Kazuyoshi ( KEK )

NAKAO Akiko ( CROSS )

KUBOTA Masato ( JAEA )

YAMADA Hiroyuki ( AIST )

SAWA Akihito ( AIST )

IWASA Kazuaki ( Tohoku Univ. )

TOMIYASU Keisuke ( Tohoku Univ. )

TERASAKI Ichiro ( Nagoya Univ. )

AMITSUKA Hiroshi ( Hokkaido Univ. )

MIYASAKA Shigeki ( Osaka Univ. )

HORIGANE Kazumasa ( Tohoku Univ. )

KATSUFUJI Takuro ( Waseda Univ. )

HANASAKI Noriaki ( Osaka Univ. )

TAGUCHI Yasujiro ( RIKEN )

OKUYAMA Daisuke ( RIKEN )

SAKAI Hideaki ( RIKEN )

ARIMA Taka-hisa ( The Univ. of Tokyo )

SAGAYAMA Hajime ( The Univ. of Tokyo )

UEDA Yutaka ( The Univ. of Tokyo )

ISOBE Masahiko ( The Univ. of Tokyo )

YAMAUCHI Tohru ( The Univ. of Tokyo )

WADATI Hiroki ( The Univ. of Tokyo )

ISHIWATA Shintaro ( The Univ. of Tokyo )

ISHIHARA Sumio ( Tohoku Univ. )

SEO Hitoshi ( RIKEN )

● Geometrical Correlation Project

KADONO Ryosuke ( KEK )

MURAKAMI Youichi ( KEK )

ITOH Sinichi ( KEK )

NAKAO Hironori ( KEK )

KOJIMA Kenji ( KEK )

KODA Akihiko ( KEK )

YOKOO Tetsuya ( KEK )

YAMADA Kazuyoshi ( KEK )

NAKAMURA Hiroyuki ( Kyoto Univ. )

TABATA Yoshikazu ( Kyoto Univ. )

UEDA Hiroaki ( Kyoto Univ. )

HIROI Zenji ( The Univ. of Tokyo )

TAKAGI Hidenori ( The Univ. of Tokyo )

TSUNETSUGU Hirokazu ( The Univ. of Tokyo )

TAKAYAMA Tomohiro ( The Univ. of Tokyo )

ISHIHARA Sumio ( Tohoku Univ. )

FUJITA Masaki ( Tohoku Univ. )

TOMIYASU Keisuke ( Tohoku Univ. )

KAWAMURA Hikaru ( Osaka Univ. )

YAMAMOTO Ayako ( RIKEN )

● Molecular Crystal Project

KUMAI Reiji ( KEK )

NAKAO Akiko ( CROSS )

MURAKAMI Youichi ( KEK )

NAKAO Hironori ( KEK )

ADACHI Shinichi ( KEK )

KOBAYASHI Kensuke ( KEK )

MORI Hatsumi ( The Univ. of Tokyo )

KANODA Kazushi ( The Univ. of Tokyo )

UJI Shinya ( NIMS )

YAMOCHI Hideki ( Kyoto Univ. )

NOGAMI Yoshio ( Okayama Univ. )

NISHIKAWA Hiroyuki ( Ibaraki Univ. )

KOBAYASHI Yuka ( NIMS )

ISHIHARA Sumio ( Tohoku Univ. )

SEO Hitoshi ( RIKEN )

KONDO Ryusuke ( The Univ. of Tokyo )

TAKAHASHI Kazuyuki ( The Univ. of Tokyo )

KAWAMOTO Tadashi ( Tokyo Tech )

TAKAISHI Shinya ( Tohoku Univ. )

<Surface/Interface Group>

● Surface/Interface Project

AMEMIYA Kenta ( KEK )

KOIDE Tsuneharu ( KEK )

ONO Kanta ( KEK )

SAKAMAKI Masako ( KEK )

KUBOTA Masato ( JAEA )

TAKEDA Masayasu ( JAEA )

YUASA Shinji ( AIST )

<Matter under Extreme Condition Group>

● Extreme condition project

KONDO Tadashi ( Osaka Univ. )

KIKEGAWA Takumi ( KEK )

INOUE Toru ( Ehime Univ. )

KUBO Tomoaki ( Kyushu Univ. )

UTSUMI Wataru ( JAEA/J-PARC )

KAGI Hiroyuki ( The Univ. of Tokyo )

FUNAMORI Nobumasa ( The Univ. of Tokyo )

OHTANI Eiji ( Tohoku Univ. )

SUZUKI Akio ( Tohoku Univ. )

TAKEMURA Kenichi ( NIMS )

NAGAI Takaya ( Hokkaido Univ. )

<Soft Matter Group>

● Soft-matter Project

SETO Hideki ( KEK )

IIDA Atsuo ( KEK )

OTOMO Toshiya ( KEK )

YAMADA Norifumi ( KEK )

SADAKANE Koichiro ( KEK )

KITAHATA Hiroyuki ( Chiba Univ. )

AMEMIYA Yoshiyuki ( The Univ. of Tokyo )

SHINOHARA Yuya ( The Univ. of Tokyo )

SUMINO Yutaka ( The Univ. of Tokyo )

TAKENAKA Yoshiko ( RIKEN )

HISHIDA Mafumi ( Univ. of Tsukuba )

### 3. Advisory Committee

KANAYA Toshiji ( Kyoto Univ. )

TOKURA Yoshinori ( The University of Tokyo )

FUJIMORI Atsushi ( The University of Tokyo )

YAGI Takehiko ( The University of Tokyo )

YAMADA Kazuyoshi ( KEK )