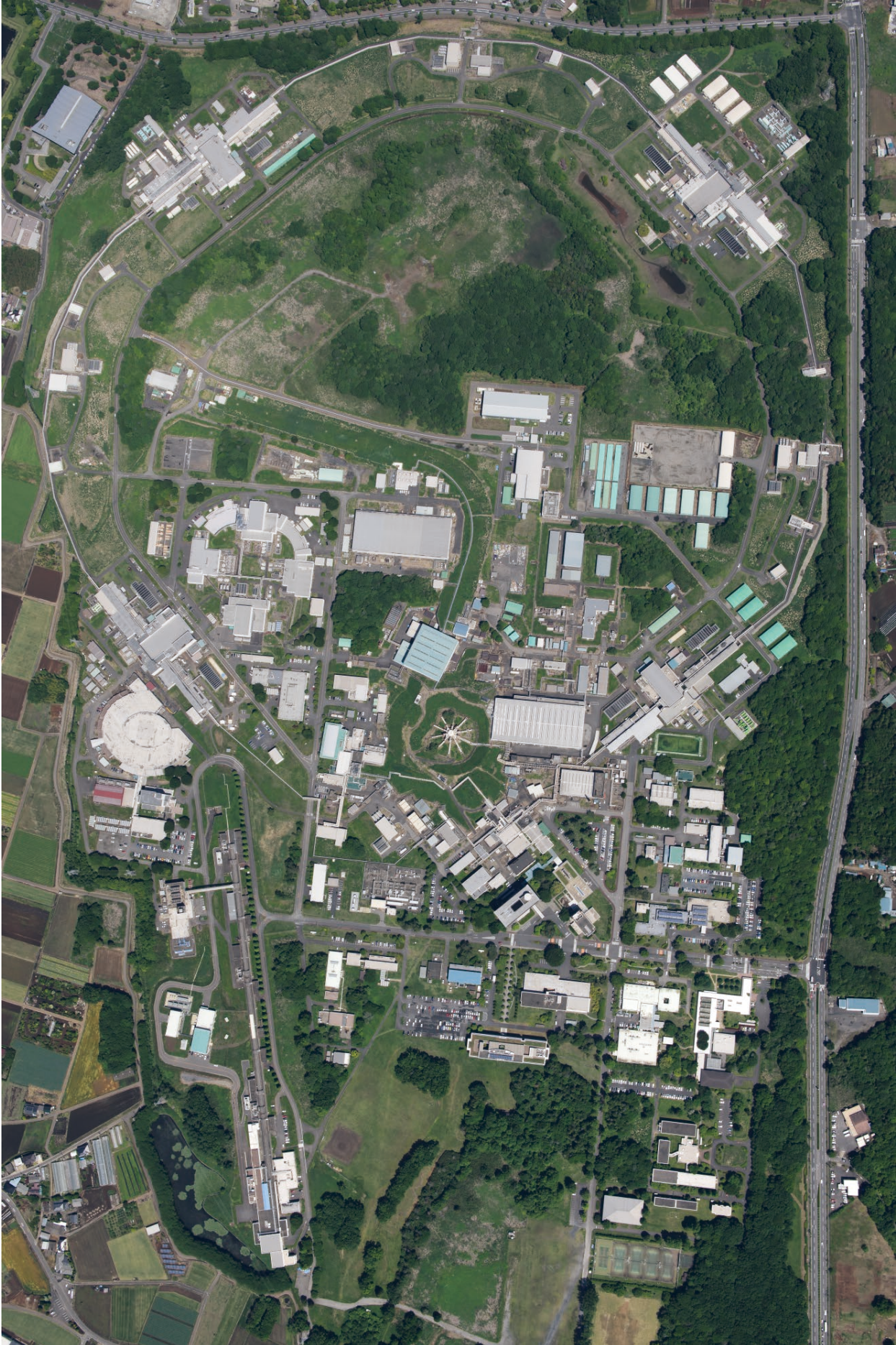
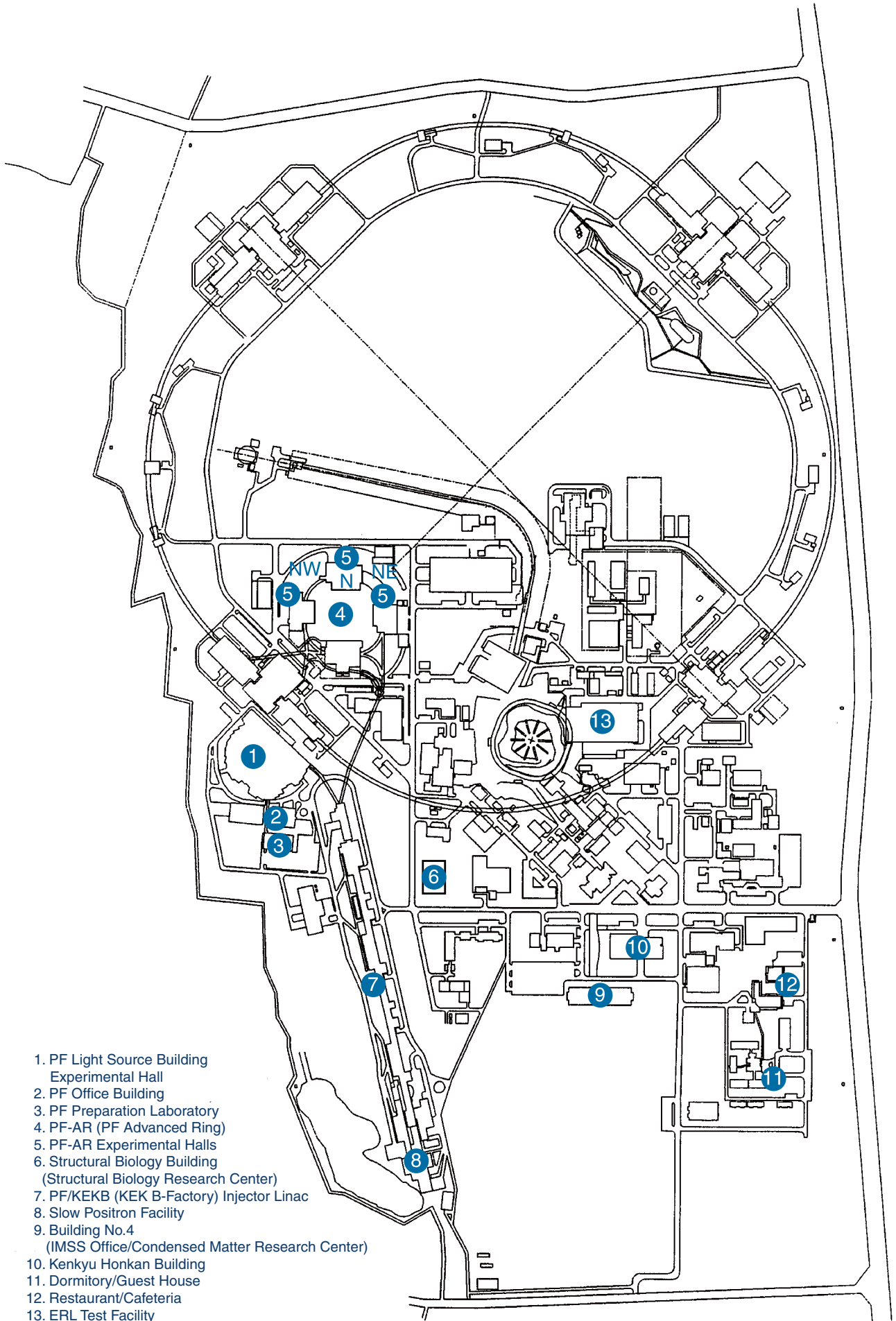


APPENDICES

Site and Organization





- 1. PF Light Source Building
Experimental Hall
- 2. PF Office Building
- 3. PF Preparation Laboratory
- 4. PF-AR (PF Advanced Ring)
- 5. PF-AR Experimental Halls
- 6. Structural Biology Building
(Structural Biology Research Center)
- 7. PF/KEKB (KEK B-Factory) Injector Linac
- 8. Slow Positron Facility
- 9. Building No.4
(IMSS Office/Condensed Matter Research Center)
- 10. Kenkyu Honkan Building
- 11. Dormitory/Guest House
- 12. Restaurant/Cafeteria
- 13. ERL Test Facility

KEK consists of four research institutions, i.e., the Institute of Materials Structure Science (IMSS), the Institute of Particle and Nuclear Studies (IPNS), the Accelerator Laboratory (AL), and the Applied Research Laboratory. As shown in Fig. 1, the IMSS constitutes

the Synchrotron Radiation Science Divisions I and II, the Neutron Science Division, the Muon Science Division, the Structural Biology Research Center, the Condensed Matter Research Center and IMSS Instrument R&D Team.

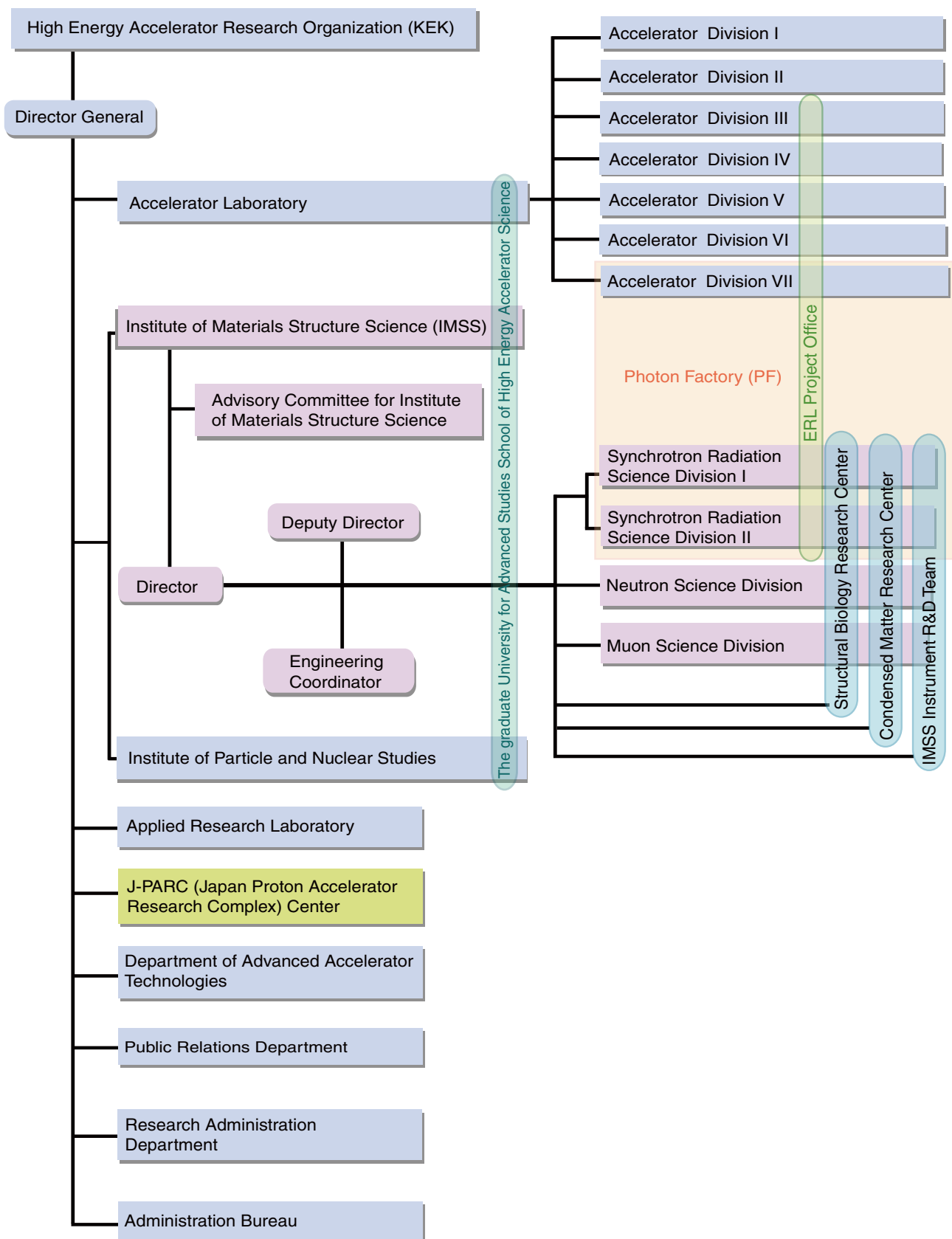


Figure 1: Organization chart of KEK.

Photon Factory (PF) consists of two divisions of the IMSS (the Synchrotron Radiation Science Divisions I and II) and the Accelerator Division VII of the AL as shown in the organization chart of Fig. 2. The staff members of the PF are listed in Table 1. Synchrotron Radiation Science Divisions I and II consist of five beamline groups (electronic structure group, condensed matter group, materials chemistry group, life sciences group and slow positron group), three engineering and

administration groups (beamline engineering, technical services & safety group, user support & dissemination group and industrial application research group) and two working groups (ultrafast dynamics group and advanced detector R&D group). The Accelerator Division VII has seven groups, which are named Light Source Group I to VII. The missions of each group are described in parentheses of Fig. 2.

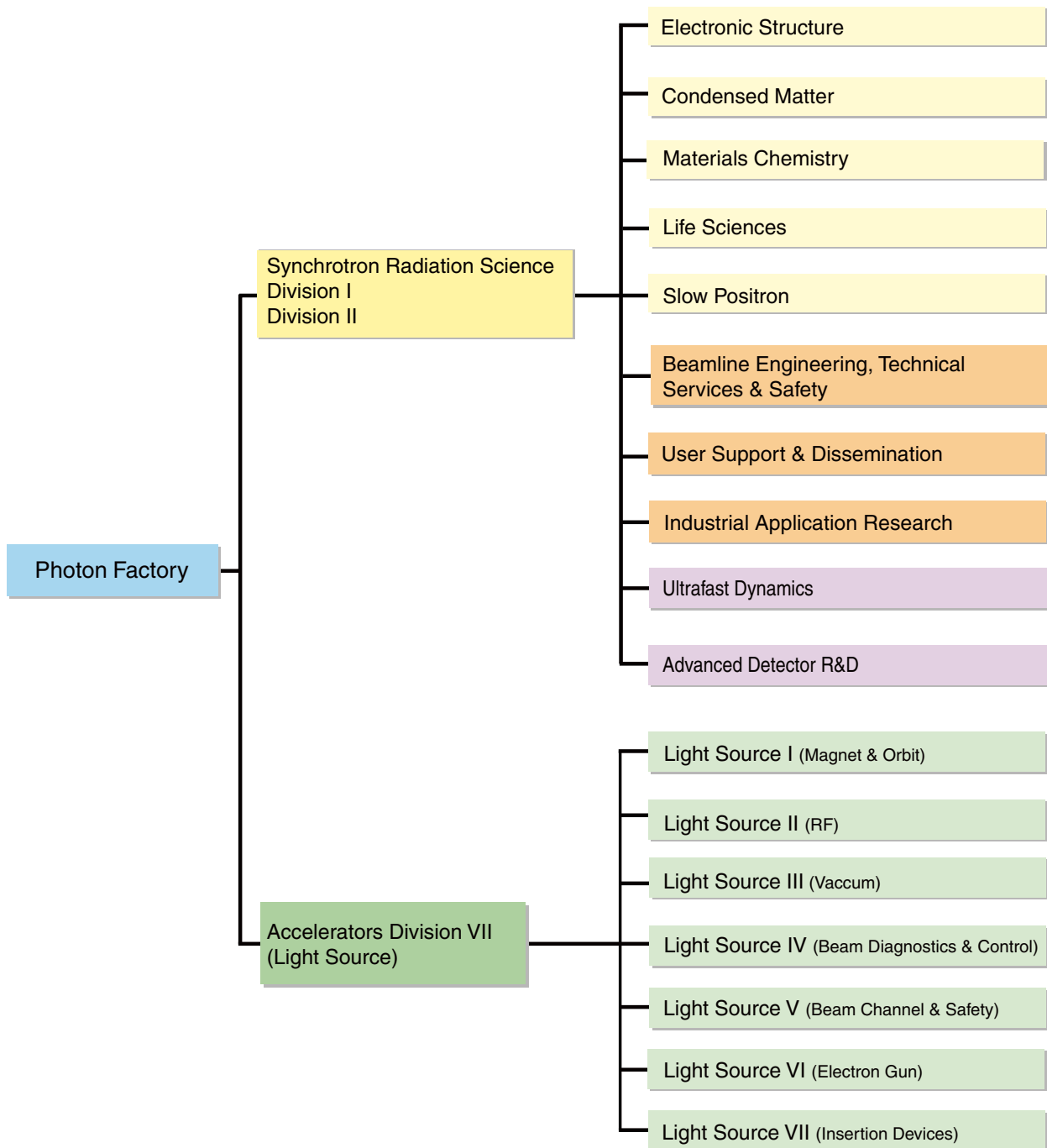


Figure 2: Organization chart of PF (as of March 31, 2017) .

Table 1: Staff members of the Photon Factory.

Group	Name	*Position Title	**Additional Group	Remarks
Research Staff				
Director	MURAKAMI, Youichi	P		
Synchrotron Radiation Science Division I & II				
Electronic Structure Group				
◎	KUMIGASHIRA, Hiroshi	P		
	AMEMIYA, Kenta	P	UD · BETSS · AD	
	HORIBA, Koji	AP		
	MASE, Kazuhiko	AP		
	ONO, Kanta	AP	AD	
	INAMI, Nobuhito	ASP	AD	
	KOBAYASHI, Masaki	ASP		
	MINOHARA, Makoto	ASP		
	SAKAMAKI, Masako	ASP	AD	
	KITAMURA, Miho	PD		
	TSUKAHARA, Hiroshi	R		
	YUKAWA, Ryu	R		
	(KITAJIMA, Yoshinori, ADACHI, Jun-ichi)			
Condensed Matter Group				
◎	KUMAI, Reiji	P	AD	
○	NAKAO, Hironori	AP	UD	
	ADACHI, Shin-ichi	P	UD · AD	
	FUNAMORI, Nobumasa	P		
	KAWATA, Hiroshi	P		
	KISHIMOTO, Shunji	P	UD · CD	
	MURAKAMI, Youichi	P		
	HIRANO, Keiichi	AP		
	ICHIYANAGI, Kohei	AP		
	IWANO, Kaoru	AP		
	KIPEGAWA, Takumi	AP		
	NOZAWA, Shunsuke	AP	UD	
	SAGAYAMA, Hajime	AP		
	FUKAYA, Ryo	ASP		
	KOBAYASHI, Kensuke	ASP		
	SAITO, Kotaro	ASP		
	WAKABAYASHI, Daisuke	PD		
	FUKUMOTO, Keiki	R		
	HARUKI, Rie	R	AD	
	TABATA Chihiro	R		
	(SUGIYAMA, Hiroshi, TAKAHASHI, Yumiko)			
Materials Chemistry Group				
◎	KIMURA, Masao	P	IAR	
○	ABE, Hitoshi	AP		
	NITANI, Hiroaki	ASP	BETSS	
	TAKEICHI, Yasuo	ASP	AD	
	NIWA, Yasuhiro	E	UD · BETSS	
	TAKAHASHI, Kei	PD		
	KITAZAWA, Rumi	R		
	(KIMIJIMA, Ken'ichi)			
Life Sciences Group				
◎	SENDA, Toshiya	P		
○	MATSUGAKI, Naohiro	AP		
	KATO, Ryuichi	AP		
	KAWASAKI, Masato	AP		
	SHIMIZU, Nobutaka	AP	BETSS	
	TANABE, Mikio	AP		
	YUMOTO, Fumiaki	AP		
	ADACHI, Naruhiko	ASP		
	HIKITA, Masahide	ASP		
	SAIJO, Shinya	ASP		
	SENDA, Miki	ASP		
	YAMADA, Yusuke	ASP		
	SATO, Tomomi	PD		

Group	Name	*Position Title	**Additional Group	Remarks
	HARADA, Ayaka	R		Oct. 1, 2016~ May. 16, 2016~ Oct. 1, 2016~Dec. 31, 2016
	KOIWAI, Koutaro	R		
	KUWABARA, Naoyuki	R		
	MILLER, Simon	R		
	NAGASE, Lisa	R		
	NISHIKAWA, Yosuke	R		
	SATO, Yukari	R		
	SHINODA, Akira	R		
	SUZUKI, Nobuhiro	R		
	(IGARASHI, Noriyuki, HYODO, Kazuyuki, USAMI, Noriko, TAKAGI, Hideaki)			
Slow Positron Group				
	◎ HYODO, Toshio	P		
	MOCHIZUKI, Izumi	ASP		
Beamline Engineering, Technical Service & Safety Group				
	◎ IGARASHI, Noriyuki	AP	AD · LS	
	○ KOYAMA, Atsushi	SE		
	○ KITAJIMA, Yoshinori	AP	ES	
	SUGIYAMA, Hiroshi	ASP	CM	
	KOSUGE, Takashi	SE	UD · AD	
	UCHIDA, Yoshinori	EE		
	MORI, Takeharu	EE		
	TOYOSHIMA, Akio	EE	UD	
	KIKUCHI, Takashi	E	UD	
	SAITO, Yuuki	E		
	TANAKA, Hirokazu	E	UD	
	MATSUOKA, Ai	AE		
	ISHII, Haruno	TA		
	NAGATANI, Yasuko	TS		
	SUZUKI, Yoshio	R		Aug. 16, 2016~
	(AMEMIYA, Kenta, SHIMIZU, Nobutaka, NITANI, Hiroaki, NIWA, Yasuhiro)			
User Support & Dissemination Group				
	◎ HYODO, Kazuyuki	AP	LS	
	○ BAN, Hiroshi	ScF	IAR	
	USAMI, Noriko	AP	LS	
	OHSIMA, Hiroko	TS		
Industrial Application Research Group				
	◎ KIMURA, Masao	P	MC	
	○ BAN, Hiroshi	SuF	USD	
	KIMIJIMA, Ken'ichi	TS	MC	
	TAKAGI, Hideaki	TS	LS	
	TAKAHASHI, Yumiko	TS	CM	
Ultrafast Dynamics Working Group				
	◎ ADACHI, Jun-ichi	AP	ES	
	YAMAMOTO, Shigeru	P		
	(ADACHI, Shin-ichi, AMEMIYA, Kenta, KISHIMOTO, Shunji, NAKAO, Hironori, NOZAWA, Shunsuke, KOSUGE, Takashi, TOYOSHIMA, Akio, KIKUCHI, Takashi, NIWA, Yasuhiro, TANAKA, Hirokazu)			
Advanced Detector R&D Working Group				
	◎ KISHIMOTO, Shunji	P	CM · UD	
	HASHIMOTO, Ryo	ASP		
	(ADACHI, Shin-ichi, KUMAI, Reiji, AMEMIYA, Kenta, ONO, Kanta, IGARASHI, Noriyuki, TAKEICHI, Yasuo, SAKAMAKI, Masako, INAMI, Nobuhito, HARUKI, Rie, KOSUGE, Takashi)			

Accelerator Division VII

Light Source I

◎ NAKAMURA, Norio	P
KOBAYASHI, Yukinori	P
HARADA, Kentaro	AP
OZAKI, Toshiyuki	AP
SHIMADA, Miho	AP
TAKAKI, Hiroyuki	AP

Group	Name	*Position Title	**Additional Group	Remarks
	UEDA, Akira	EE		Oct. 1, 2016~
	NAGAHASHI, Shinya	E		
	TANAKA, Olga	ASP		
	HIGASHI, Nao	PD		
Light Source II				
	◎ SAKANAKA, Shogo	P		
	YAMAMOTO, Naoto	ASP		
	TAKAHASHI, Takeshi	EE		
Light Source III				
	◎ HONDA, Tohru	P		
	TANIMOTO, Yasunori	AP		
	SASAKI, Hiroyuki	ASP		
	NOGAMI, Takashi	E		
	ASAOKA, Seiji	SF		
Light Source IV				
	◎ OBINA, Takashi	AP		
	TAKAI, Ryota	AP		
	TADANO, Mikito	SE		
	SAGEHASHI, Hidenori	E		
Light Source V				
	◎ MIYAUCHI, Hiroshi	AP		
	HAGA, Kaiichi	AP		
	NIGORIKAWA, Kazuyuki	EE		
	SATO, Yoshihiro	E		
	TAHARA, Toshihiro	E		
Light Source VI				
	◎ MIYAJIMA, Tsukasa	AP		
	HONDA, Yosuke	ASP		
	YAMAMOTO, Masahiro	ASP		
	JIN, Xiuguang	ASP		
	UCHIYAMA, Takashi	EE		
	SATO, Kotaro	R		
				Jul. 1, 2016~
Light Source VII				
	◎ KATO, Ryukou	P		
	TSUCHIYA, Kimichika	AP		
	ADACHI, Masahiro	ASP		
	SHIOYA, Tatsuro	SF		
	NISHIDA, Maya	AE		
				Apr. 16, 2016~Sep. 30, 2016

*Synchrotron Radiation Science Division (Italic: additional posts)

ES	Electronic Structure
CM	Condensed Matter
MC	Materials Chemistry
LS	Life Sciences
SP	Slow Positron
BETSS	Beamline Engineering, Technical Services and Safety
USD	User Support and Dissemination
IAR	Industrial Application Research
UD	Ultrafast Dynamics
AD	Advanced Detector R&D

*Position Title

P	Professor	SE	Senior Engineer
AP	Associate Professor	EE	Expert Engineer
ASP	Assistant Professor	E	Engineer
PD	Postdoctoral Fellow	AE	Associate Engineer
R	Researcher	TA	Technical Associate
SF	Senior Fellow	TS	Technical Specialist
ScF	Scientific Fellow		

◎ Group Leader ○ Sub Group Leader

	Name	Affiliation	Remarks
Researcher	WAKATSUKI, Soichi		
Visiting Professor	ASAKURA, Kiyotaka KONDO, Hiroshi KOSHIHARA, Shinya MORITOMO, Yutaka NAGASHIMA, Yasuyuki NODA, Yukio OHKUMA, Haruo OKUBO, Masataka SAKASHITA, Hitoshi TAKAHASHI, Yoshio YAO, Min	(Hokkaido Univ.) (Keio Univ.) (Tokyo Inst. of Tech.) (Univ. of Tsukuba) (Tokyo Univ. of Science) (Tohoku Univ.) (SPring-8) (AIST) (AIST) (The Univ. of Tokyo) (Hokkaido Univ.)	
Visiting Associate Professor	KAMIKUBO, Hironari	(Nara Inst. of Science and Tech.)	
The Graduate University for Advanced Studies (SOKENDAI)	AIZAWA, Kyohei HOTEI, Takahiro INOUE, Keisuke MATSUBARA, Haruki MIYAZAWA, Tetusya YU, Hong Yang		