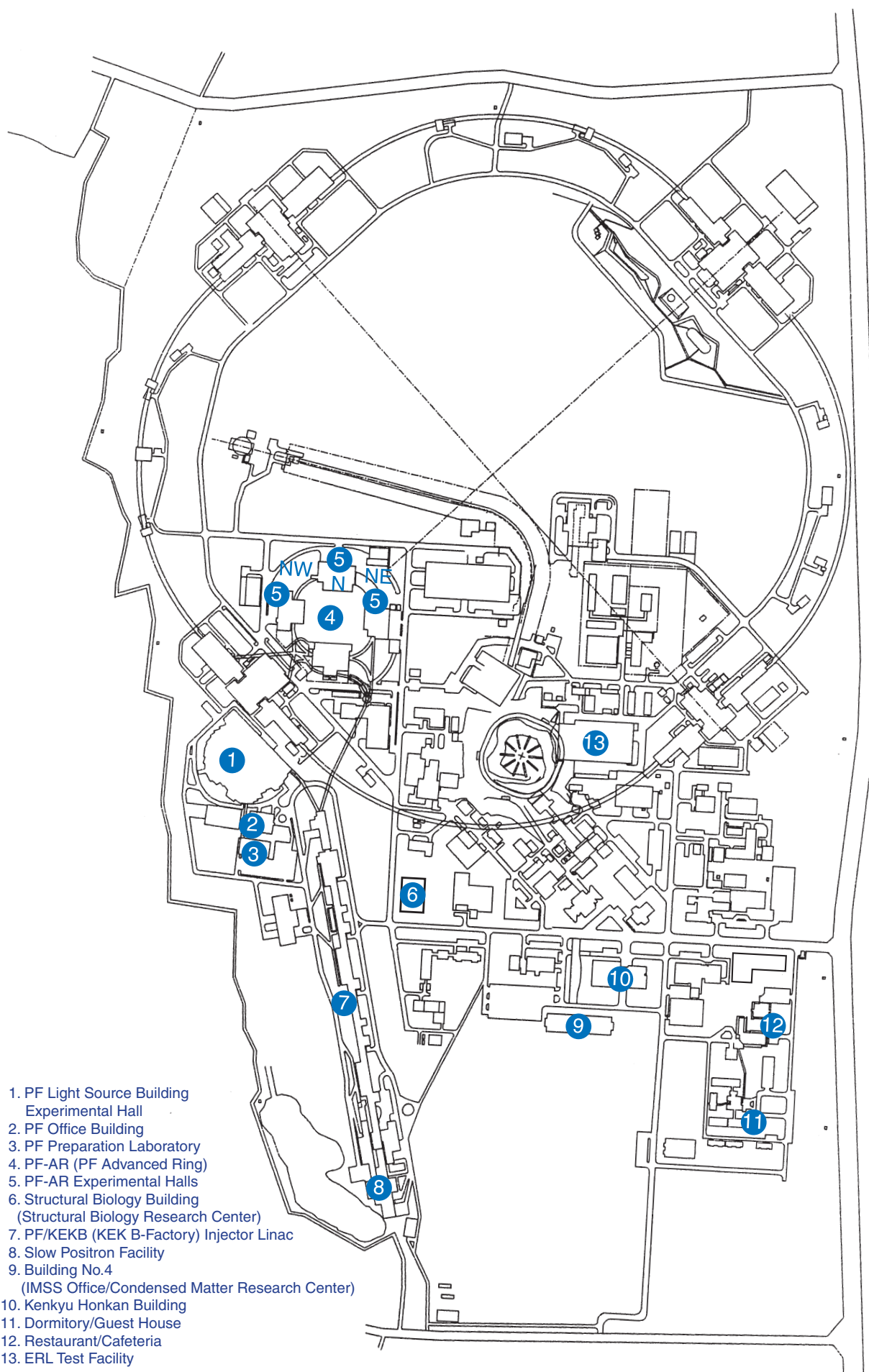


APPENDICES

Site and Organization





KEK consists of four research institutions, i.e., the Institute of Materials Structure Science (IMSS), the Institute of Particle and Nuclear Studies (IPNS), the Accelerator Laboratory (AL), and the Applied Research Laboratory (ARL). As shown in Fig. 1, the IMSS com-

prises the Photon Factory, the Synchrotron Radiation Science Divisions I and II, the Slow Positron Facility, the Neutron Science Division, the Muon Science Division, the Structural Biology Research Center, and the Condensed Matter Research Center.

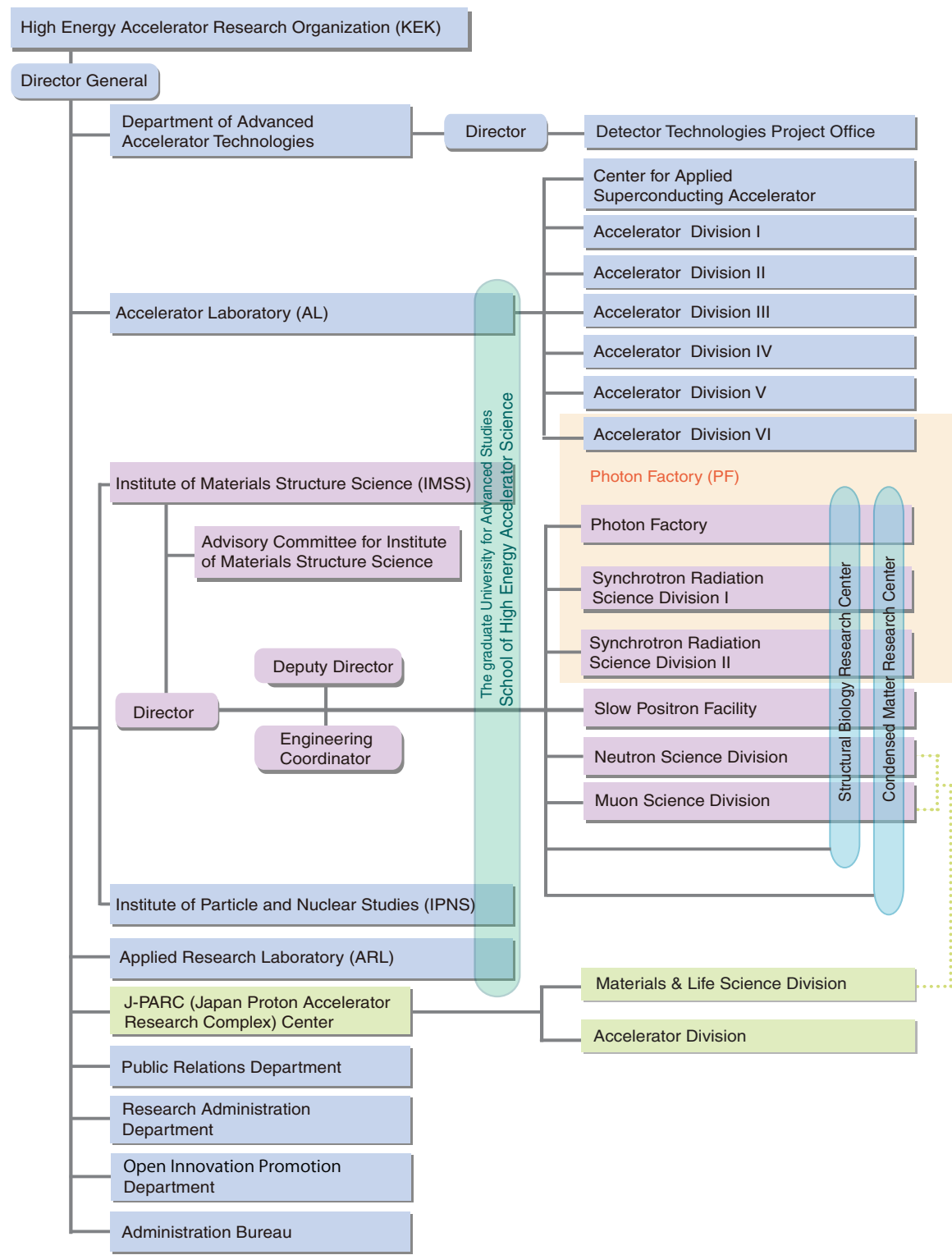


Figure 1: Organization chart of KEK.

The “Photon Factory (PF)” also means a group of divisions, a facility division (Photon Factory), two science divisions (Synchrotron Radiation Science Divisions I and II), and a light source accelerator division (Accelerator Division VI), as shown in the organization chart of Fig. 2. The staff members of the PF are listed in Table 1. The Photon Factory consists of three sections (administration section, beam line engineering section,

and end station engineering section); the Synchrotron Radiation Science Divisions I and II consist of four sections (surface science section, solid state physics section, structural biology section, and materials science section). The Accelerator Division VI has seven groups, which are named Light Source Group I to VII. The missions of each group are written in parentheses in Fig. 2.

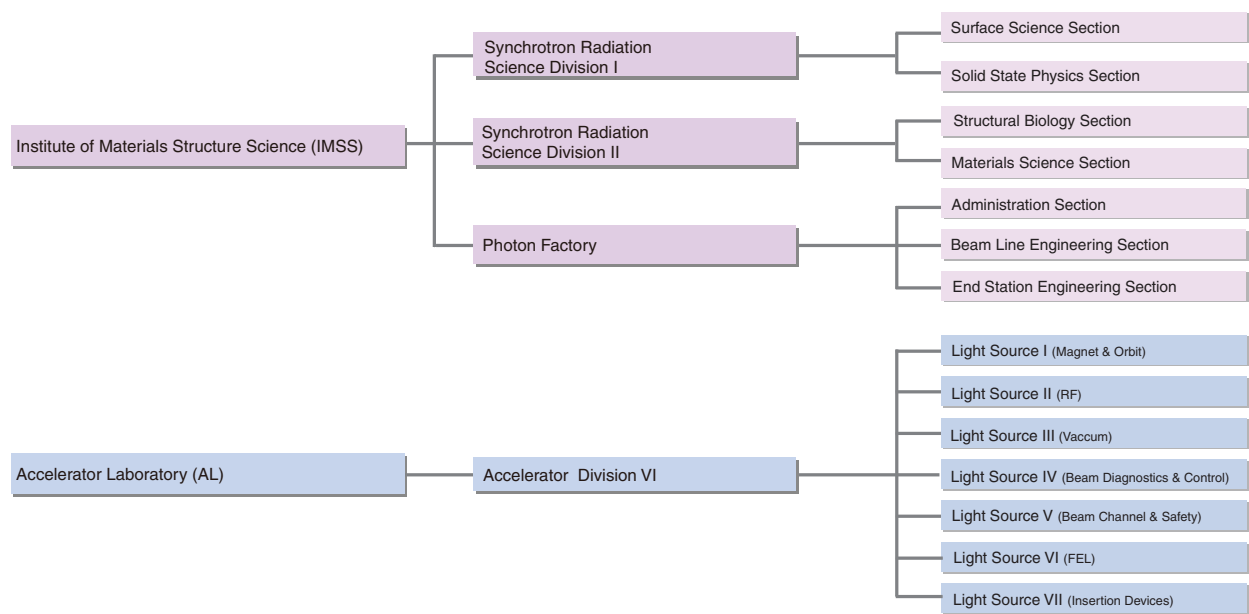


Figure 2: Organization chart of PF (as of March 31, 2020) .

Table 1: Staff members of the Photon Factory.

Division	Section/Group	Name	*Position Title	Remarks
Research Staff				
IMSS Director		KOSUGI, Nobuhiro		
IMSS Deputy Director		ADACHI, Shin-ichi		
Synchrotron Radiation Science Division I				
Head		AMEMIYA, Kenta		
	Surface Science Section			
	◎	AMEMIYA, Kenta	P	
		KUMIGASHIRA, Hiroshi	P	
		HORIBA, Koji	AP	
		KITAMURA, Miho	ASP	
		OBATA, Yukiko	PD	~Sep.30, 2019
		YUKAWA, Ryu	ASP	~Oct. 31, 2019
	Solid State Physics Section			
	◎	KUMAI, Reiji	P	
		MURAKAMI, Youichi	P	
		NAKAO, Hironori	AP	
		SAGAYAMA, Hajime	AP	
		IWANO, Kaoru	AP	
		ISHII, Yuta	PD	
		TAMATSUKURI, Hiromu	R	
		YAMAGUCHI, Tokitake	R	
Synchrotron Radiation Science Division II				
Head		SENDA, Toshiya		
	Structural Biology Section			
	◎	SENDA, Toshiya	P	
		KATO, Ryuichi	AP	
		KAWASAKI, Masato	AP	
		ADACHI, Naruhiko	AP	
		TANABE, Mikio	AP	
		YUMOTO, Fumiaki	AP	~Jun. 30, 2019
		MORIYA, Toshio	AP	
		HIKITA, Masahide	ASP	
		SENDA, Miki	ASP	
		YAMADA, Yusuke	ASP	
		SHINODA, Akira	PD	
		AKUTSU, Masato	R	Mar. 1, 2020~
		HARADA, Ayaka	R	~Sep. 30, 2019
		KOIWAI, Koutaro	R	~Feb. 20, 2020
		KOBAYASHI, Jun	R	
		NAGASE, Lisa	R	
		YONEZAWA, Kento	R	
		GIANNOPOULOU, Evdokia Anastasia	R	
	Materials Science Section			
	◎	KIMURA, Masao	P	
		ADACHI, Shin-ichi	P	
		YAMAMOTO, Shigeru	P	
		ABE, Hitoshi	AP	
		ONO, Kanta	AP	
		FUKUMOTO, Keiki	AP	
		TAKEICHI, Yasuo	ASP	
		FUKAYA, Ryo	ASP	
		HAWAI, Takafumi	ASP	
		HARUKI, Rie	R	May. 1, 2019~Sep. 30, 2019
		ICHIYANAGI, Kouhei	R	Dec. 1, 2019~

Division	Section/Group	Name	*Position Title	Remarks
		SAITO, Kotaro	R	Sep. 1, 2019~
		TSUKAHARA, Hiroshi	R	
		MATSUMOTO, Munehisa	R	
		WATANABE, Toshiki	R	
Photon Factory				
Head		FUNAMORI, Nobumasa		
	Administration Section			
	◎	FUNAMORI, Nobumasa	P	
		HYODO, Kazuyuki	AP	
		KIMIJIMA, Ken'ichi	AP	
		KITAJIMA, Yoshinori	AP	
		USAMI, Noriko	AP	
	Beam Line Engineering Section			
	◎	IGARASHI, Noriyuki	P	
		KISHIMOTO, Shunji	P	
		HIRANO, Keiichi	AP	
		MASE, Kazuhiko	AP	
		ADACHI, Jun-ichi	AP	
		SUGIYAMA, Hiroshi	ASP	
		NITANI, Hiroaki	ASP	
		WAKABAYASHI, Daisuke	ASP	
		NISHIMURA, Ryutaro	PD	
		SUZUKI, Yoshio	R	
		KOSUGE, Takashi	SE	
		KOYAMA, Atsushi	SE	
		MORI, Takeharu	EE	
		TOYOSHIMA, Akio	EE	
		UCHIDA, Yoshinori	EE	
		KIKUCHI, Takashi	E	
		SAITO, Yuuki	E	
		TANAKA, Hirokazu	E	
		NIWA, Yasuhiro	E	
		MATSUOKA, Ai	AE	
		ISHII, Haruno	TA	
		NAGATANI, Yasuko	TS	
	End Station Engineering Section			
	◎	SHIMIZU, Nobutaka	P	
		NOZAWA, Shunsuke	AP	
		MATSUGAKI, Naohiro	AP	
		TAKAGI, Hideaki	ASP	
		YAMASHITA, Shohei	ASP	
		OHARA, Maki	R	
		KIYEGAWA, Takumi	R	
		HARUKI, Rie	R	Oct. 1, 2019~
Slow Positron Facility				
Head		KOSUGI, Nobuhiro		
		NAGAI, Yasuyoshi	P	
		MOCHIZUKI, Izumi	ASP	
		HYODO, Toshio	DF	
Structural Biology Research Center				
Head		SENDA, Toshiya		
		WATANABE, Shoukei	TS	
Condensed Matter Research Center				
Head		KADONO, Ryouyuke		
		KURAMOTO, Yoshio	P	

Division	Section/Group	Name	*Position Title	Remarks
Accelerator Division VI				
Head	Light Source I	KOBAYASHI, Yukinori		
		◎	NAKAMURA, Norio	P
			KOBAYASHI, Yukinori	P
			HARADA, Kentaro	AP
			MITSUDA, Chikaori	AP
			SHIMADA, Miho	AP
			SHIMOSAKI, Yoshito	AP
			TAKAKI, Hiroyuki	AP
			TANAKA, Olga	ASP
			HIGASHI, Nao	ASP
			UEDA, Akira	EE
			NAGAHASHI, Shinya	E
			OZAKI, Toshiyuki	R
	Light Source II	◎	SAKANAKA, Shogo	P
			NAITO, Daichi	ASP
			YAMAMOTO, Naoto	ASP
			TAKAHASHI, Takeshi	EE
	Light Source III	◎	HONDA, Tohru	P
			TANIMOTO, Yasunori	AP
			YAMAMOTO, Masahiro	AP
			JIN, Xiuguang	ASP
			SASAKI, Hiroyuki	ASP
			UCHIYAMA, Takashi	E
	Light Source IV		NOGAMI, Takashi	E
		◎	OBINA, Takashi	P
			TAKAI, Ryota	AP
			TADANO, Mikito	SE
	Light Source V		SAGEHASHI, Hidenori	E
		◎	MIYAUCHI, Hiroshi	AP
			HAGA, Kaiichi	AP
			NIGORIKAWA, Kazuyuki	EE
			SATO, Yoshihiro	E
	Light Source VI		TAHARA, Toshihiro	E
		◎	KATO, Ryukou	P
	Light Source VII		HONDA, Yosuke	ASP
		◎	TSUCHIYA, Kimichika	AP
			ADACHI, Masahiro	ASP
			EGUCHI, Shu	TA
		SHIOYA, Tatsuro	SF	
IMSS General Affairs Office				
Head	BAN, Hiroshi			
	IMSS Public Relations Office			
		OHSHIMA, Hiroko	TS	
		FUKABORI, Kyoko	TS	

	Name	(Affiliation)	Remarks
Visiting Professor			
	ASAKURA, Kiyotaka	(Hokkaido Univ.)	
	IWASAKI, Kenji	(Univ. of Tsukuba)	
	KAMIKUBO, Hironari	(Nara Inst. of Science & Tech.)	
	KONDO, Hiroshi	(Keio Univ.)	
	NAGASHIMA, Yasuyuki	(Tokyo Univ. of Science)	
	OHKUMA, Haruo	(Osaka Univ.)	
	TAKAHASHI, Yoshio	(The Univ. of Tokyo)	
	YAO, Min	(Hokkaido Univ.)	
Visiting Associate Professor			
	NIWA, Ryusuke	(Univ. of Tsukuba)	
	SATO, Tomoko	(Hiroshima Univ.)	
	SOUA, Seigo	(Tohoku Univ.)	
	SUZUKI, Masako	(Gunma Univ.)	
Visiting Assistant Professor			
	IKEDA, Shugo	(Univ. of Hyogo)	
	OZAWA, Kenich	(Tokyo Tech)	
Research Assistant			
	FUKAMI, Yusuke		
	INABA, Kazue		
	KATO, Koki		
	SHIGA, Daisuke		May. 16, 2019~
	TAKAGI, Sota		
	YAMAMOTO, Ryosuke		
The Graduate University for Advanced Studies (SOKENDAI)			
	AIZAWA, Kyohei		
	BAJPAI, Rishabh		
	HARANO, Takayuki		
	KAMEZAWA, Chika		
	LU, Yao		
	MIKI, Hiromi		
	SUZUKI, Yuta		
	YAMAGUCHI, Takaaki		
	YU, Hong Yang		

© Division Head/Group Leader

*Position Title

P Professor
AP Associate Professor
ASP Assistant Professor
PD Postdoctoral Fellow
R Researcher
SF Senior Fellow
ScF Scientific Fellow

SE Senior Engineer
EE Expert Engineer
E Engineer
AE Associate Engineer
TA Technical Associate
TS Technical Specialist
DF Diamond Fellow