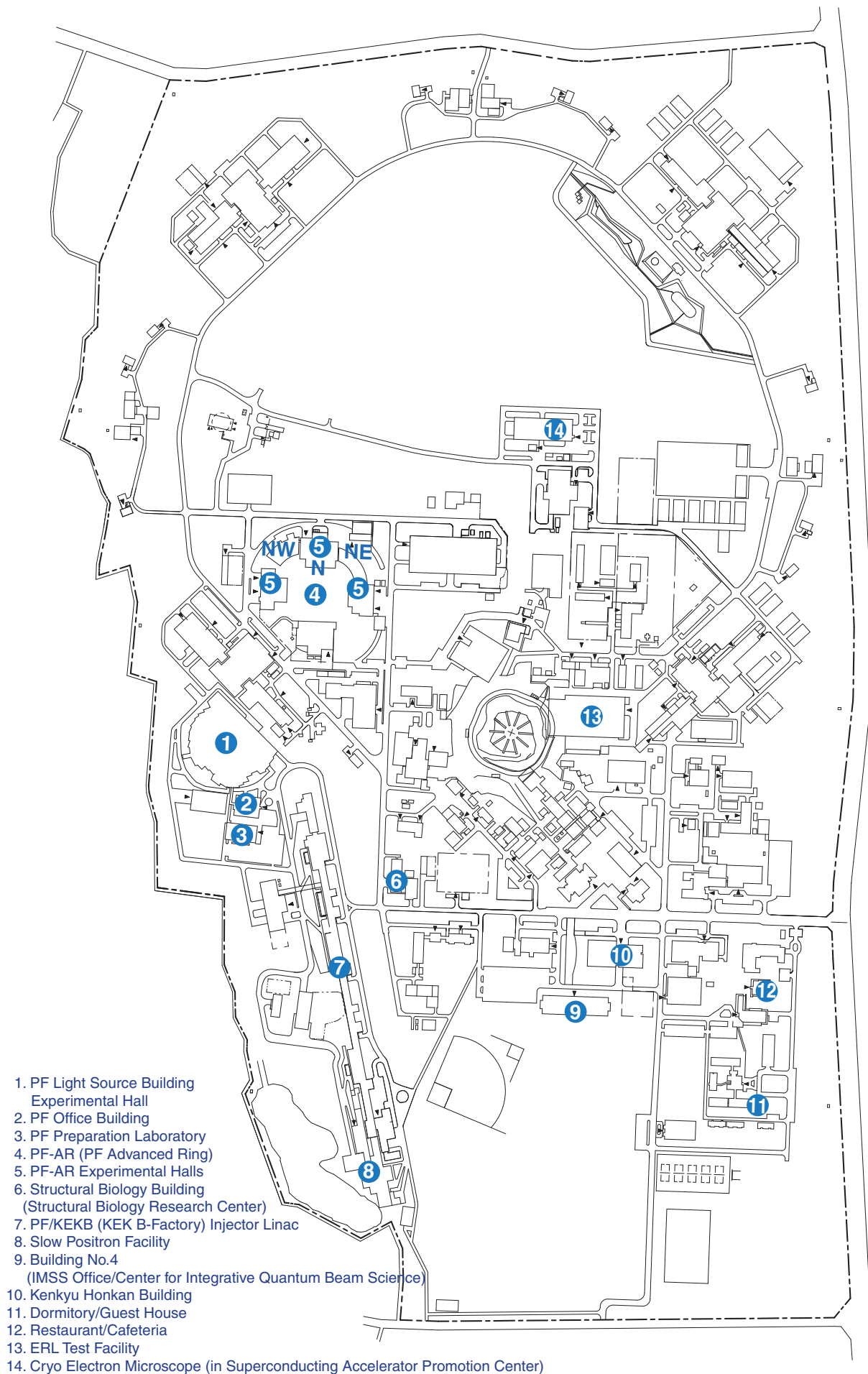


APPENDICES

Site and Organization





1. PF Light Source Building
Experimental Hall
2. PF Office Building
3. PF Preparation Laboratory
4. PF-AR (PF Advanced Ring)
5. PF-AR Experimental Halls
6. Structural Biology Building
(Structural Biology Research Center)
7. PF/KEKB (KEK B-Factor) Injector Linac
8. Slow Positron Facility
9. Building No.4
(IMSS Office/Center for Integrative Quantum Beam Science)
10. Kenkyu Honkan Building
11. Dormitory/Guest House
12. Restaurant/Cafeteria
13. ERL Test Facility
14. Cryo Electron Microscope (in Superconducting Accelerator Promotion Center)

KEK consists of four research institutions, i.e., the Institute of Materials Structure Science (IMSS), the Institute of Particle and Nuclear Studies (IPNS), the Accelerator Laboratory (AL), and the Applied Research Laboratory (ARL). As shown in Fig. 1, the IMSS com-

prises the Photon Factory, the Synchrotron Radiation Science Divisions I and II, the Slow Positron Facility, the Neutron Science Division, the Muon Science Division, the Structural Biology Research Center, and the Center for Integrative Quantum Beam Science.

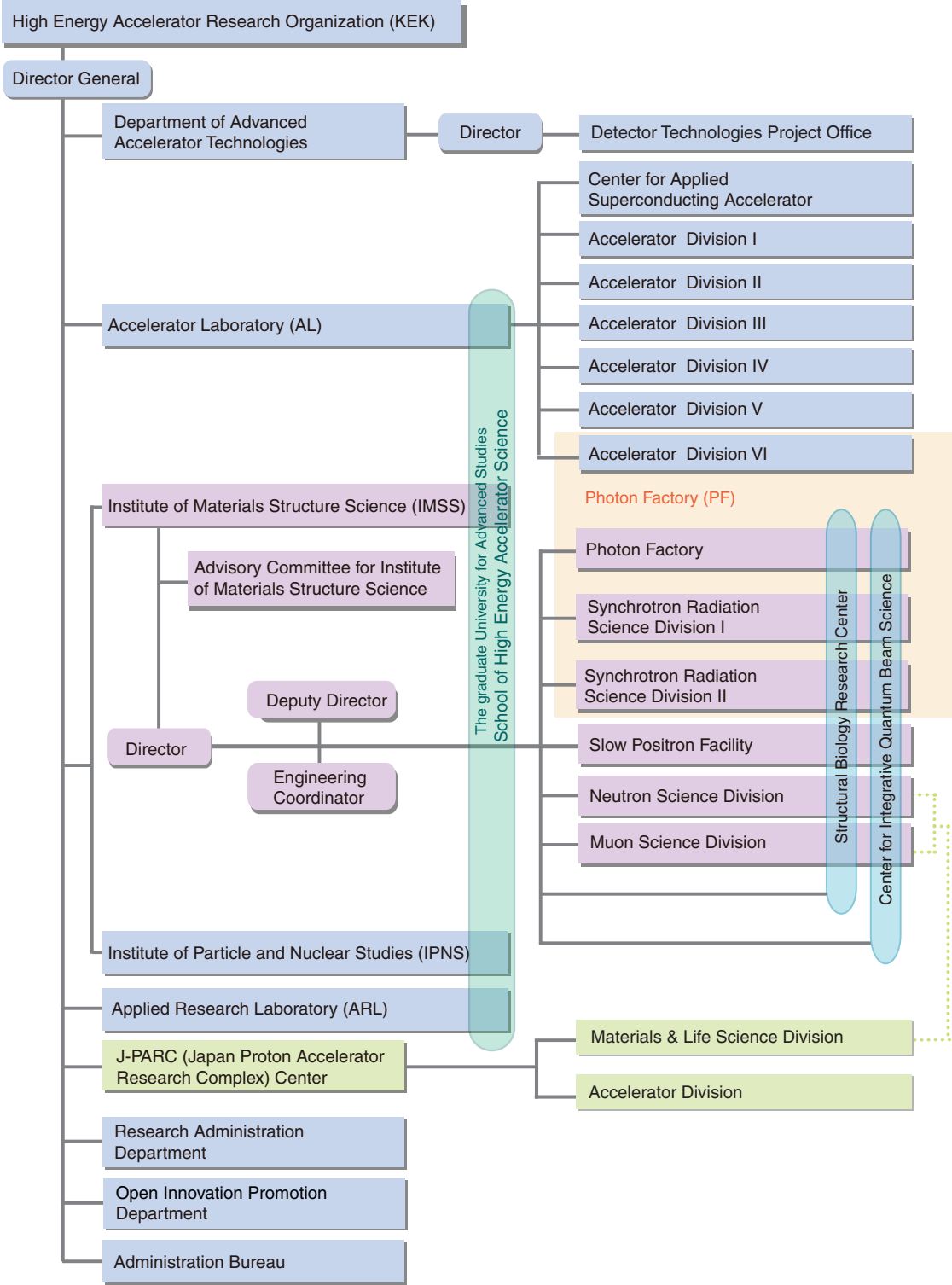


Figure 1: Organization chart of KEK.

The “Photon Factory (PF)” also means a group of divisions, a facility division (Photon Factory), two science divisions (Synchrotron Radiation Science Divisions I and II), and a light source accelerator division (Accelerator Division VI), as shown in the organization chart of Fig. 2. The staff members of the PF are listed in Table 1. The Photon Factory consists of three sections (administration section, beam line engineering section, and end station

engineering section); the Synchrotron Radiation Science Divisions I and II consist of four sections (surface science section, solid state physics section, structural biology section, and materials science section). The Accelerator Division VI has six groups, which are named Light Source Group I to V and VII. The missions of each group are written in parentheses in Fig. 2.

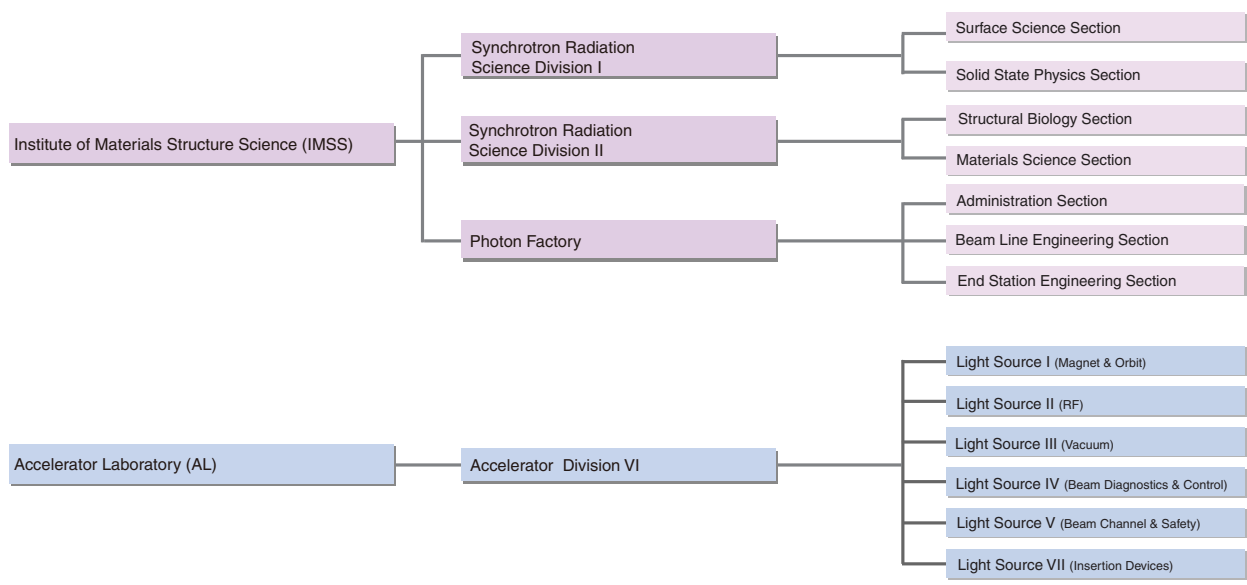


Figure 2: Organization chart of PF (as of March 31, 2021) .

Table 1: Staff members of the Photon Factory.

Division	Section/Group	Name	*Position Title	Remarks
Research Staff				
	IMSS Director	KOSUGI, Nobuhiro	P	
	IMSS Deputy Director	ADACHI, Shin-ichi	P	
Synchrotron Radiation Science Division I				
	Head	AMEMIYA, Kenta		
	Surface Science Section			
	◎	AMEMIYA, Kenta	P	
		KUMIGASHIRA, Hiroshi	P	
		HORIBA, Koji	AP	
		KITAMURA, Miho	ASP	
		SAKATA, Kaoruho	PD	
		SHIGA, Daisuke	RA	Aug. 1, 2020 ~
	Solid State Physics Section			
	◎	KUMAI, Reiji	P	
		NAKAO, Hironori	AP	
		SAGAYAMA, Hajime	AP	
		IWANO, Kaoru	AP	
		YAMAGUCHI, Tokitake	R	
Synchrotron Radiation Science Division II				
	Head	SENDA, Toshiya		
	Structural Biology Section			
	◎	SENDA, Toshiya	P	
		KATO, Ryuichi	AP	
		KAWASAKI, Masato	AP	
		ADACHI, Naruhiko	AP	
		TANABE, Mikio	AP	
		MORIYA, Toshio	AP	
		HIKITA, Masahide	ASP	
		SENDA, Miki	ASP	
		YAMADA, Yusuke	ASP	
		SHINODA, Akira	R	
		KOBAYASHI, Jun	R	
		NAGASE, Lisa	R	
		ITO, Doshun	R	Oct. 1, 2020 ~
		TSUYUGUCHI, Masato	R	
		AKUTSU, Masato	R	
		OHSIDA, Tatsuya	R	
		YONEZAWA, Kento	R	
	Materials Science Section			
	◎	KIMURA, Masao	P	
		ADACHI, Shin-ichi	P	
		YAMAMOTO, Shigeru	P	
		ABE, Hitoshi	AP	
		FUKUMOTO, Keiki	AP	
		TAKEICHI, Yasuo	ASP	
		FUKAYA, Ryo	ASP	
		HAWAI, Takafumi	ASP	
		ICHIYANAGI, Kohei	R	
		TAKAGI, Sota	R	
		SAITO, Kotaro	R	
		TSUKAHARA, Hiroshi	R	
		MATSUMOTO, Munehisa	R	
		HARUKI, Rie	R	~ Oct. 31, 2020

Division	Section/Group	Name	*Position Title	Remarks
Photon Factory				
	Head	FUNAMORI, Nobumasa		
	Administration Section			
	◎	HYODO, Kazuyuki	P	
		FUNAMORI, Nobumasa	P	
		KIMIJIMA, Ken'ichi	AP	
		USAMI, Noriko	AP	
		KITAJIMA, Yoshinori	AP	
	Beamline Engineering Section			
	◎	IGARASHI, Noriyuki	P	
		KISHIMOTO, Shunji	P	
		HIRANO, Keiichi	AP	
		MASE, Kazuhiko	AP	
		ADACHI, Jun-ichi	AP	
		SUGIYAMA, Hiroshi	ASP	
		NITANI, Hiroaki	ASP	
		WAKABAYASHI, Daisuke	ASP	
		NISHIMURA, Ryutaro	PD	
		SUZUKI, Yoshio	R	
		KOSUGE, Takashi	SE	
		KOYAMA, Atsushi	SE	
		TOYOSHIMA, Akio	SE	
		MORI, Takeharu	EE	
		UCHIDA, Yoshinori	EE	
		KIKUCHI, Takashi	E	
		SAITO, Yuuki	E	
		TANAKA, Hirokazu	E	
		NIWA, Yasuhiro	E	
		MATSUOKA, Ai	AE	
		ISHII, Haruno	TA	
		NAGATANI, Yasuko	TS	
	End Station Engineering Section			
	◎	SHIMIZU, Nobutaka	P	
		NOZAWA, Shunsuke	AP	
		MATSUGAKI, Naohiro	AP	
		TAKAGI, Hideaki	ASP	
		YAMASHITA, Shohei	ASP	
		SHIBAZAKI, Yuki	ASP	
		KAMEZAWA, Chika	PD	Oct. 1, 2020 ~
		OHARA, Maki	R	
		KANAZAWA, Tomoki	R	
		KIKEGAWA, Takumi	R	
		HARUKI, Rie	R	Nov. 1, 2020 ~
Slow Positron Facility				
	Head	KOSUGI, Nobuhiro		
		NAGAI, Yasuyoshi	P	
		WADA, Ken	AP	
		MOCHIZUKI, Izumi	ASP	
		HYODO, Toshio	DF	
Structural Biology Research Center				
	Head	SENDA, Toshiya		
		WATANABE, Shokei	TS	
		OLIERIC, Vincent Robert Nicole	LTIF	Feb. 1, 2021 ~
Center for Integrative Quantum Beam Science				
	Head	AMEMIYA, Kenta		
		MURAKAMI, Yoichi	P	
		ONO, Kanta	AP	
		AHMED, Rezwan	PD	Nov. 1, 2020 ~

Division	Section/Group	Name	*Position Title	Remarks
Accelerator Division VI				
Head	Light Source I	KOBAYASHI, Yukinori		
		◎	NAKAMURA, Norio	P
			KOBAYASHI, Yukinori	P
			HARADA, Kentaro	AP
			MITSUDA, Chikaori	AP
			SHIMADA, Miho	AP
			SHIMOSAKI, Yoshito	AP
			TAKAKI, Hiroyuki	AP
			UEDA, Akira	EE
			NAGAHASHI, Shinya	E
			TANAKA, Olga	ASP
			HIGASHI, Nao	ASP
			OZAKI, Toshiyuki	R
	Light Source II	◎	SAKANAKA, Shogo	P
			NAITO, Daichi	ASP
			YAMAMOTO, Naoto	ASP
			TAKAHASHI, Takeshi	SE
	Light Source III	◎	HONDA, Tohru	P
			TANIMOTO, Yasunori	AP
			YAMAMOTO, Masahiro	AP
			JIN, Xiuguang	ASP
			SASAKI, Hiroyuki	ASP
			UCHIYAMA, Takashi	E
	Light Source IV		NOGAMI, Takashi	E
		◎	OBINA, Takashi	P
			TAKAI, Ryota	AP
			TADANO, Mikito	SE
	Light Source V		SAGEHASHI, Hidenori	E
		◎	MIYAUCHI, Hiroshi	AP
			HAGA, Kaiichi	SF
			NIGORIKAWA, Kazuyuki	EE
			SATO, Yoshihiro	SF
	Light Source VII		TAHARA, Toshihiro	EE
		◎	TSUCHIYA, Kimichika	AP
			ADACHI, Masahiro	ASP
			EGUCHI, Shu	AE
		SHIOYA, Tatsuro	SF	
IMSS General Affairs Office				
Head		BAN, Hiroshi		
IMSS Public Relations Office				
		OHSIMA, Hiroko	TS	
		FUKABORI, Kyoko	TS	

	Name	(Affiliation)	Remarks
Visiting Professor			
	ASAKURA, Kiyotaka	(Hokkaido Univ.)	
	IWASAKI, Kenji	(Univ. of Tsukuba)	
	KAMIKUBO, Hironari	(Nara Inst. of Science & Tech.)	
	KONDO, Hiroshi	(Keio Univ.)	
	MURATA, Takeshi	(Chiba Univ.)	
	NAGASHIMA, Yasuyuki	(Tokyo Univ. of Science)	
	NIWA, Ryusuke	(Univ. of Tsukuba)	
	TAKAHASHI, Yoshio	(The Univ. of Tokyo)	
Visiting Associate Professor			
	IKEDA, Shugo	(Univ. of Hyogo)	
	YAMASAKI, Yuichi	(NIMS)	
	SOUA, Seigo	(Tohoku Univ.)	
	SUZUKI, Masako	(Gunma Univ.)	
Visiting Assistant Professor			
	OZAWA, Kenichi	(Tokyo Tech)	
Research Assistant			
	SHIBUYA, Kohei		July. 1, 2020~Sep. 30, 2020
	TADA, Ryoma		Jun. 1, 2020~
	ONO, Masato		Aug. 16, 2020~
	YAMAMOTO, Ryosuke		July. 1, 2020~
SOKENDAI (The Graduate University for Advanced Studies)			
	HARANO, Takayuki		
	KAMEZAWA, Chika		~ Sep. 30, 2020
	KUMAKI, Fumitoshi		
	LU, Yao		
	MIKI, Hiromi		
	SUGAWARA, Takahiro		
	SUZUKI, Yuta		
	UY, Mayrene Allam		2020/12/16~
	YAMAGUCHI, Takaaki		
	YU, Hong Yang		

© Section Leader

*Position Title

P	Professor
AP	Associate Professor
ASP	Assistant Professor
PD	Postdoctoral Fellow
R	Researcher
SF	Senior Fellow
ScF	Scientific Fellow
RA	Research Assistant

SE	Senior Engineer
EE	Expert Engineer
E	Engineer
AE	Associate Engineer
TA	Technical Associate
TS	Technical Specialist
PF	Postdoctoral Fellow
DF	Diamond Fellow
LTIF	Long-Term Invited Fellow