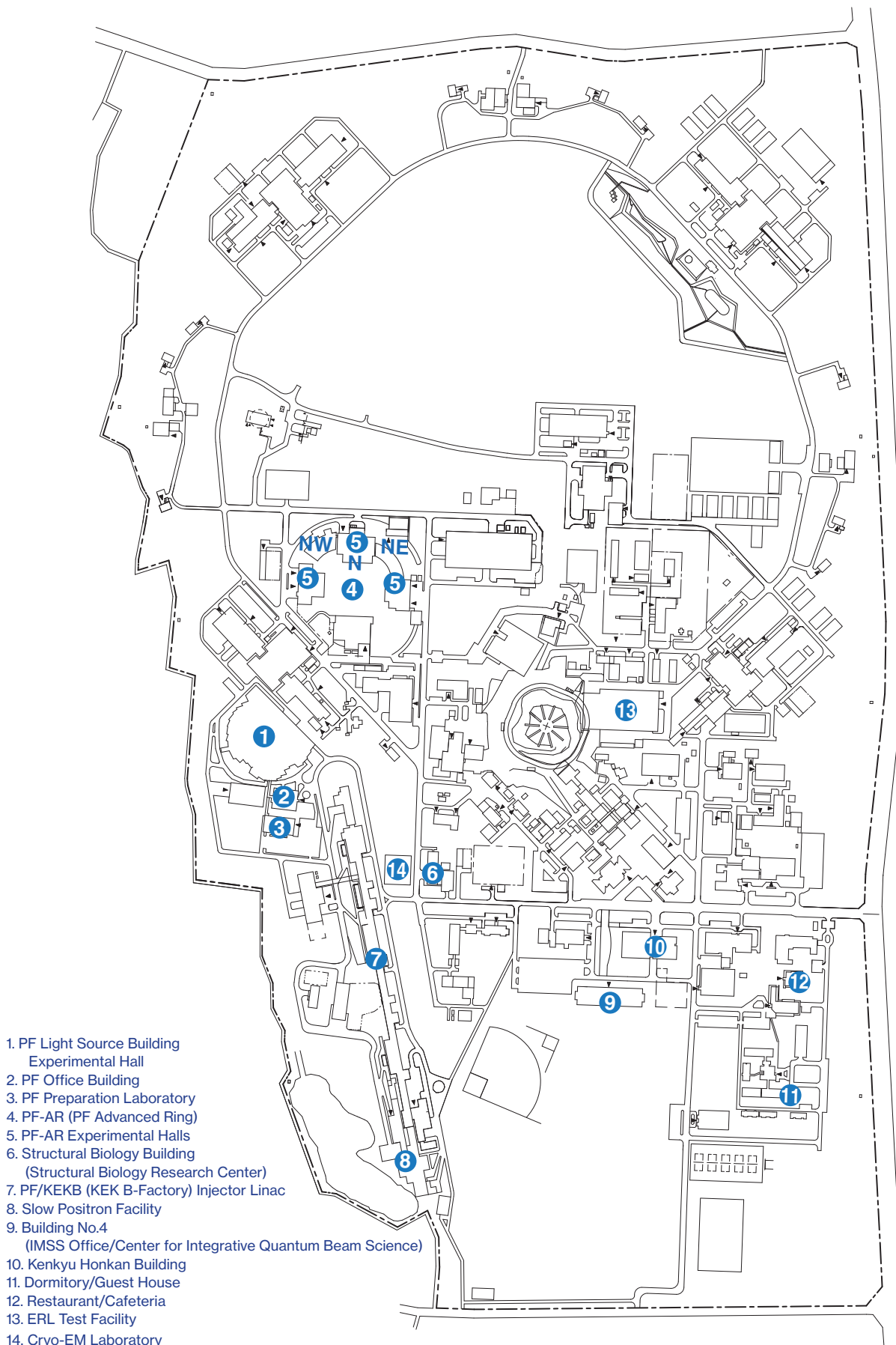


APPENDICES

Site and Organization





KEK consists of four research institutions, i.e., the Institute of Materials Structure Science (IMSS), the Institute of Particle and Nuclear Studies (IPNS), the Accelerator Laboratory (ACCL), and the Applied Research Laboratory (ARL). As shown in Fig. 1, the IMSS comprises the Photon Factory, the Synchrotron

Radiation Science Divisions I and II, the Slow Positron Facility, the Neutron Science Division, the Muon Science Division, the Structural Biology Research Center, the Center for Integrative Quantum Beam Science, and the Scientific Innovation Center.

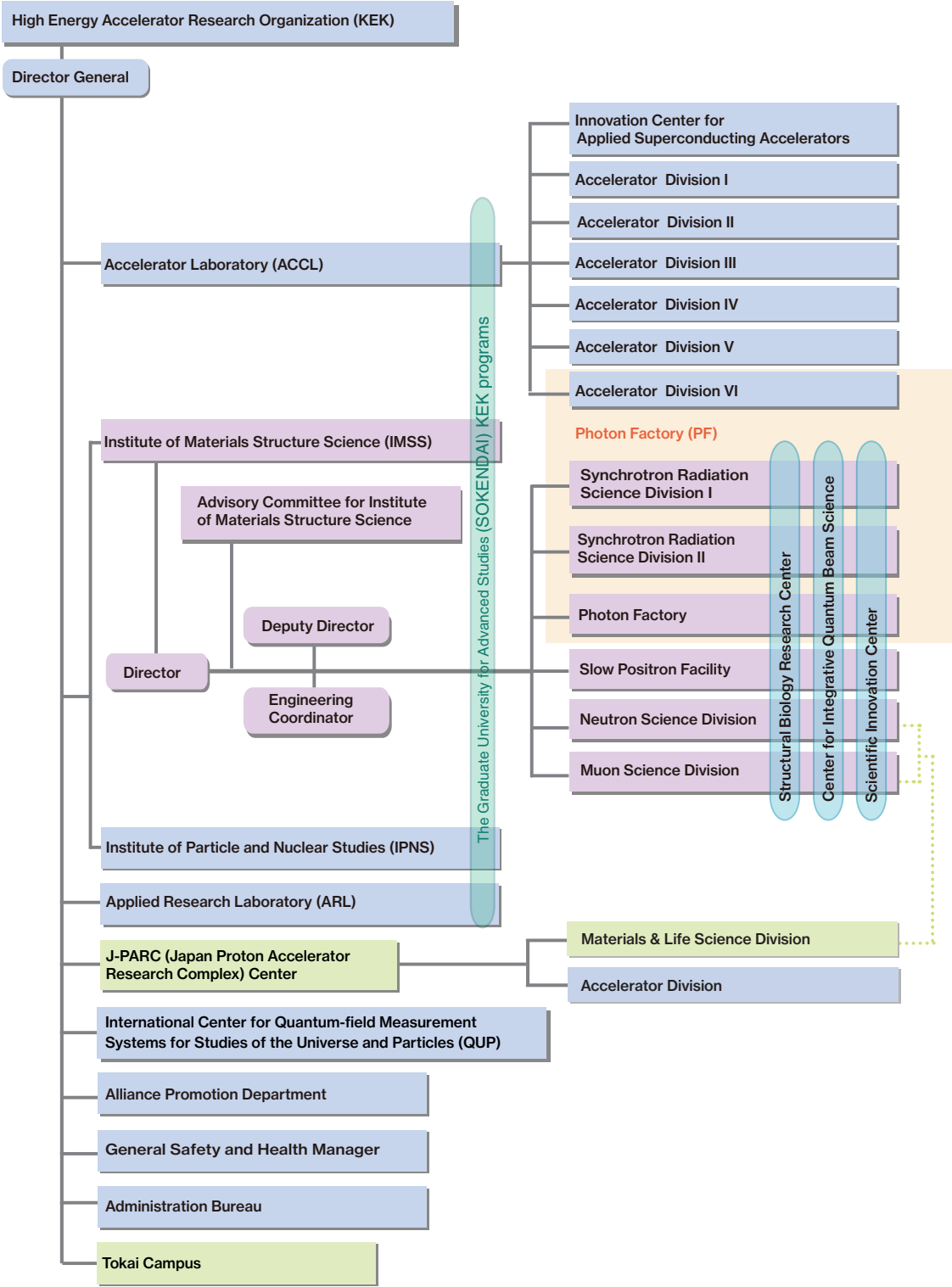


Figure 1: Organization chart of KEK.

The “Photon Factory (PF)” also means a group of divisions, a facility division (Photon Factory), two science divisions (Synchrotron Radiation Science Divisions I and II), and a light source accelerator division (Accelerator Division VI), as shown in the organization chart of Fig. 2. The staff members of the PF are listed in Table 1. The Photon Factory consists of three sections (Administration Section, Beam Line

Engineering Section, and End Station Engineering Section); the Synchrotron Radiation Science Divisions I and II consist of four sections (Surface Science Section, Solid State Physics Section, Structural Biology Section, and Materials Science Section). The Accelerator Division VI has seven groups, which are named Light Source Group I to VII. The missions of each group are written in parentheses in Fig. 2.

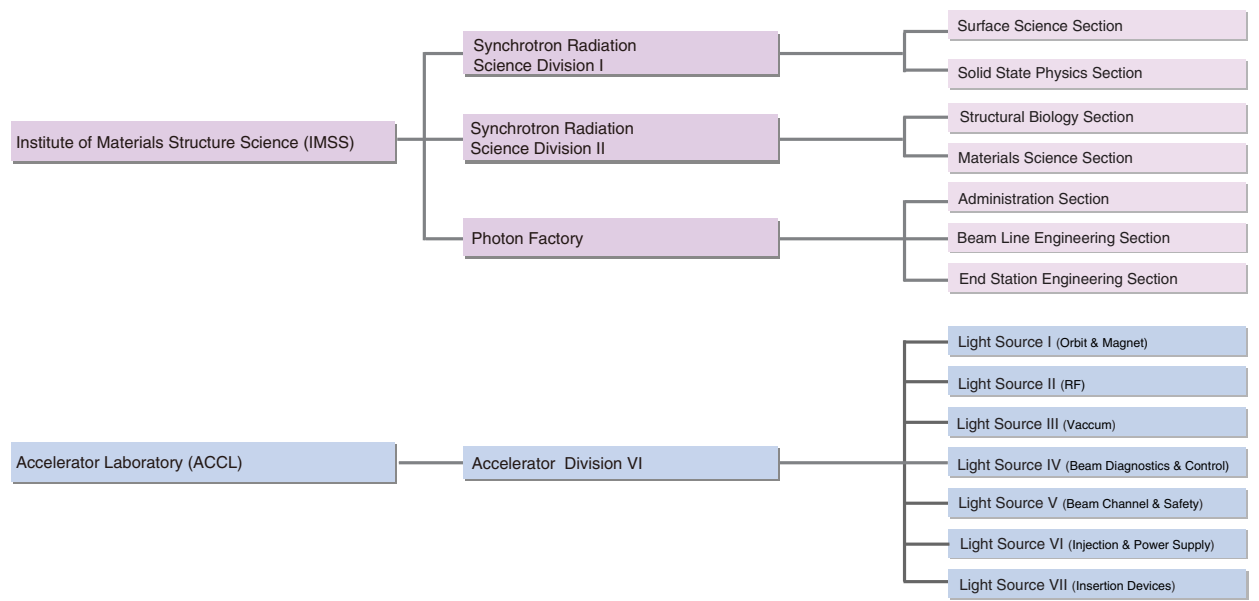


Figure 2: Organization chart of PF (as of March 31, 2025) .

Table 1: Staff members of the Photon Factory.

Division	Section/Group	Name	*Position Title	Remarks
Research Staff				
IMSS Director		FUNAMORI, Nobumasa		
IMSS Deputy Director (TSUKUBA)		AMEMIYA, Kenta		
Synchrotron Radiation Science Division I				
Head		AMEMIYA, Kenta		
	Surface Science Section			
	◎	AMEMIYA, Kenta	P	
		SAKATA, Kaoruho	AP	
		AHMED, Rezwan	ASP	Jan. 1, 2025~
	Solid State Physics Section			
	◎	KUMAI, Reiji	P	
		NAKAO, Hironori	AP	~Sep. 30, 2024
		SAGAYAMA, Hajime	AP	
		KADONO, Ryosuke	R	~Jun. 16, 2024
		DEY, Sourav Kumar	PD	~Jun. 7, 2024
Synchrotron Radiation Science Division II				
Head		SENDA, Toshiya		
	Structural Biology Section			
	◎	SENDA, Toshiya	P	
		KATO, Ryuichi	AP	
		KAWASAKI, Masato	AP	
		TANABE, Mikio	AP	
		MORIYA, Toshio	AP	
		HIKITA, Masahide	ASP	
		SENDA, Miki	ASP	
		IKEDA, Akihito	R	
		GENOVESO, Michelle Jane Clemeno	R	Apr. 16, 2024~
		TSUYUGUCHI, Masato	R	
		NAKAMURA Tsukasa	R	Jul. 16, 2024~
		MILLER, Simon Andrew	R	Dec. 1, 2024~
		FUJII, Yuki	R	Dec. 16, 2024~
		FAN, Dongxiao	R	May. 31, 2024~
	Materials Science Section			
	◎	KIMURA, Masao	P	
		ABE, Hitoshi	AP	
		NOZAWA, Shunsuke	AP	
		FUKUMOTO, Keiki	AP	
		KIDO, Daiki	ASP	
		YAMAMOTO, Shigeru	R	
		HARUKI Rie	R	
		KIM, Youngmin	R	
		UY, Mayrene Allam	R	
		PYATENKO, Elizaveta	R	
		YOSHIDA, Kazuki	R	

Division	Section/Group	Name	*Position Title	Remarks
Photon Factory				
Head	Administration Section	IGARASHI, Noriyuki		
		◎ KITAJIMA, Yoshinori	P	
		IGARASHI, Noriyuki	P	
		USAMI, Noriko	P	
		KIMIJIMA, Ken'ichi	AP	
		SATO, Tomoko	AP	
		OSHITA, Hiromi	ASP	
	Beamline Engineering Section	◎ OZAWA, Kenichi	P	Oct. 1, 2024～
		MASE, Kazuhiko	P	
		HIRANO, Keiichi	P	
		ADACHI, Jun-ichi	AP	
		SUGIYAMA, Hiroshi	ASP	
		WAKABAYASHI, Daisuke	ASP	
		NISHIMURA, Ryutaro	ASP	
		KUMAKI, Fumitoshi	PD	
		KOSUGE, Takashi	CE	
		TOYOSHIMA, Akio	SE/ECn	
		UCHIDA, Yoshinori	SE/ECn	
		MORI, Takeharu	SE	Oct. 1, 2024～
		MORI, Takeharu	EE	～Sep. 30, 2024
		KIKUCHI, Takashi	EE	
		KANEKO, Naokatsu	E	
		SAITO, Yuuki	E	
		TANAKA, Hirokazu	E	
		NITANI, Hiroaki	E	
		MATSUOKA, Ai	E	
		ISHII, Haruno	AE	
		KATAOKA, Ryoma	AE	
		NARITA, Chiharu	TA	
		NAGATANI, Yasuko	TS	
		KOYAMA, Atsushi	SF	
	End Station Engineering Section	◎ NAKAO, Hironori	P	Oct. 1, 2024～
		MATSUGAKI, Naohiro	P	Oct. 1, 2024～
		MATSUGAKI, Naohiro	AP	～Sep. 30, 2024
		OHIGASHI, Takuji	AP	
		OKUYAMA, Daisuke	AP	
		OZAWA, Kenichi	AP	～Sep. 30, 2024
		TAKAGI, Hideaki	ASP	
		YAMASHITA, Shohei	ASP	
		NIWA, Yasuhiro	ASP	
		SHIBAZAKI, Yuki	ASP	
		HYODO, Kazuyuki	R	
Slow Positron Facility				
Head	Slow Positron Section	AMEMIYA, Kenta		
		◎ AMEMIYA, Kenta	P	
		WADA, Ken	AP	
		MOCHIZUKI, Izumi	ASP	
		AHMED, Rezwan	PD	～Dec. 31, 2024
Structural Biology Research Center				
Head		SENDA, Toshiya		
Center for Integrative Quantum Beam Science				
Head		AMEMIYA, Kenta		
		YAMADA, Norifumi	AP	
		MIKI, Hiromi	PD	～Apr. 30, 2024

Division	Section/Group	Name	*Position Title	Remarks
Scientific Inobation Center				
Head		FUNAMORI, Nobumasa		
		ONO, Kanta	P	
		TOMONO, Dai	ASP	
Accelerator Division VI				
Head		OBINA, Takashi		
	Light Source I	◎ HARADA, Kentaro SHIMOSAKI, Yoshito SHIMOSAKI, Yoshito TANAKA, Olga HIGASHI, Nao NAKAMURA, Norio NAGAHASHI, Shinya	P P AP ASP ASP R/SF SE/ECs	Jan. 1, 2025~ ~Dec. 31, 2024
	Light Source II	◎ YAMAMOTO, Naoto NAITO, Daichi SAKANAKA, Shogo MOTOMURA, Arata TAKAHASHI, Takeshi	AP ASP P/SF TA SF	
	Light Source III	◎ HONDA, Tohru TANIMOTO, Yasunori JIN, Xiuguang SASAKI, Hiroyuki BIAN, Baoyuan UCHIYAMA, Takashi NOGAMI, Takashi TANAKA, Madoka	P P ASP ASP PD SE EE AE	Oct. 1, 2024~
	Light Source IV	◎ TAKAI, Ryota SAGEHASHI, Hidenori SHIOZAWA, Mami TADANO, Mikito	AP EE AE SF	
	Light Source V	◎ MIYAUCHI, Hiroshi HAGA, Kaiichi NIGORIKAWA, Kazuyuki TAHARA, Toshihiro	P R SE/ECn EE	
	Light Source VI	◎ MITSUDA, Chikaori ◎ MITSUDA, Chikaori TAKAKI, Hiroyuki SHINOHARA, Satoshi KOBAYASHI, Yukinori UEDA, Akira	P AP AP APS P/SF EE	Oct. 1, 2024~ ~Sep. 30, 2024
	Light Source VII	◎ TSUCHIYA, Kimichika ADACHI, Masahiro SAITO, Hirotoishi EGUCHI, Shu	P AP ASP AE	
IMSS Public Relations Office				
		IRIE, Atsuko	TS	
		OHSHIMA, Hiroko	TS	

Division	Section/Group	Name	*Position Title	Remarks
Visiting Professor				
		HORIBA, Koji	(QST)	
		HOSHI, Takeo	(NIFS)	
		KIHARA, Daisuke	(Purdue Univ.)	
		SUGIYAMA, Masaaki	(Kyoto Univ.)	
		TAKEYA, Satoshi	(AIST)	
		YONEYAMA, Akio	(SAGA Light Source)	
Visiting Associate Professor				
		MAEKI, Masatoshi	(Hokkaido Univ.)	
		MINOHARA, Makoto	(AIST)	
		OGASAWARA, Satoshi	(Chiba Univ.)	
Research Assistant				
		NGUYEN, Thi My Le	Jun. 1, 2024~	
		RILLERA, Angelo Perez	Jun. 1, 2024~Sep. 30, 2024	
		WATANABE, Ruau	Jun. 1, 2024~	
		SATO, Kazuki	Jun. 1, 2024~	
		AHMAD, Aftab	Nov. 1, 2024~	
The Graduate University for Advanced Studies (SOKENDAI)				
		AHMAD, Aftab	Oct. 1, 2024~	
		WATANABE, Ruau		
		NGUYEN, Thi My Le		
© Section Leader			CE	Chief Engineer
*Position Title			ECn	Engineering Coordinator
P	Professor		ECs	Engineering Counselor
AP	Associate Professor		SE	Senior Engineer
ASP	Assistant Professor		EE	Expert Engineer
PD	Postdoctoral Fellow		E	Engineer
R	Researcher		AE	Associate Engineer
SF	Senior Fellow		TA	Technical Associate
ScF	Scientific Fellow		TS	Technical Specialist
RA	Research Assistant		DF	Diamond Fellow