

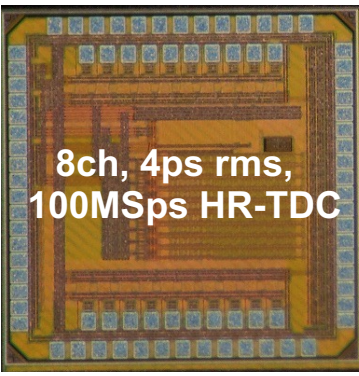
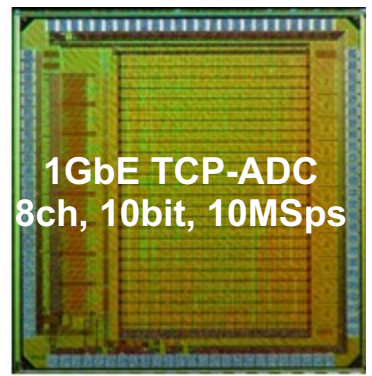
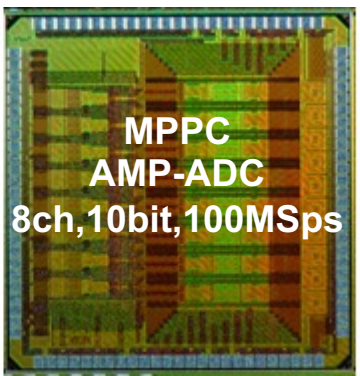
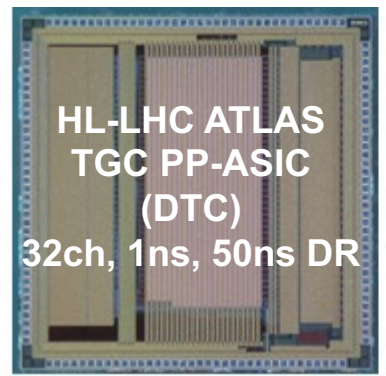
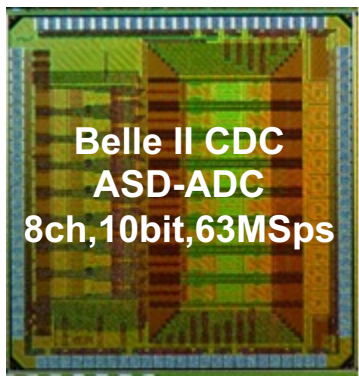
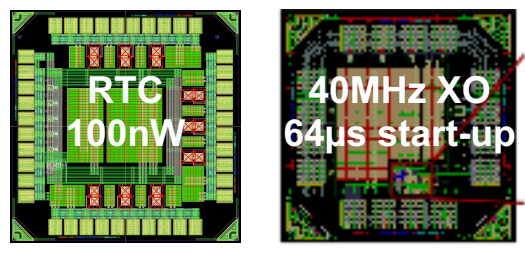
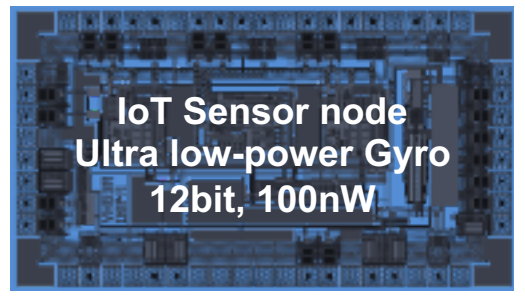
# Masaya Miyahara

2017~ Associate Professor in IPNS, KEK

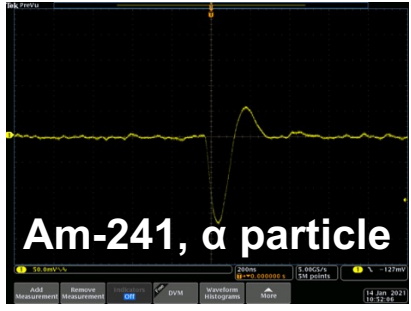
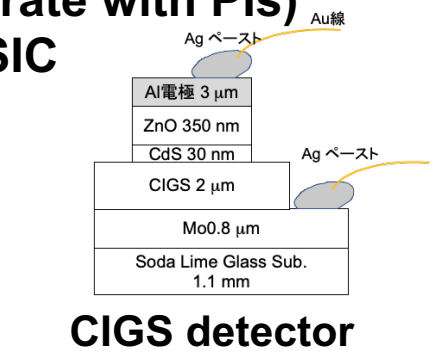
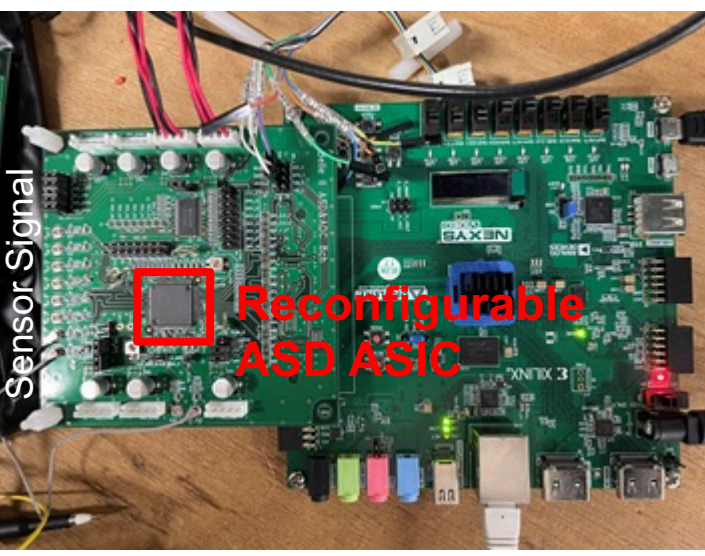
Research area: Analog Mixed signal LSI and its applications



Collaboration with Industry



## Activity 1. Read-out ASIC (collaborate with PIs) Ex. Rad-hard detector read-out ASIC



## Activity 2. Design automation for Analog LSI

ASIC development issue

- Long TAT
- Difficult to fix the bug
- Engineer Education (Analog 10 years)

Concepts

- Performance scalable
- Process scalable
- Effective use of past works (know-how)

