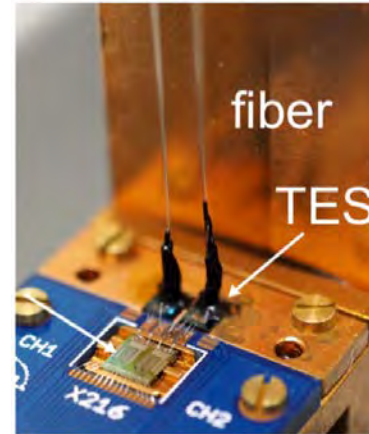
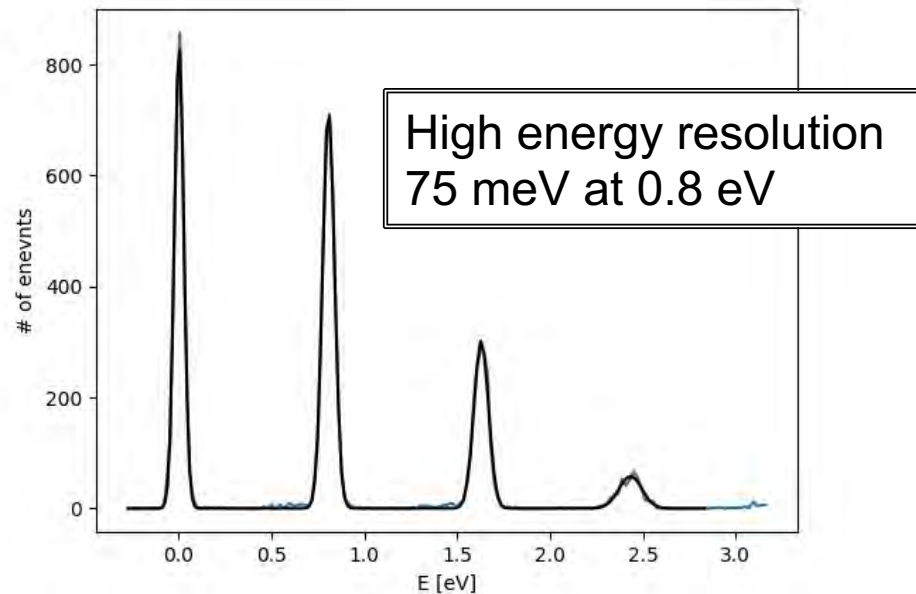
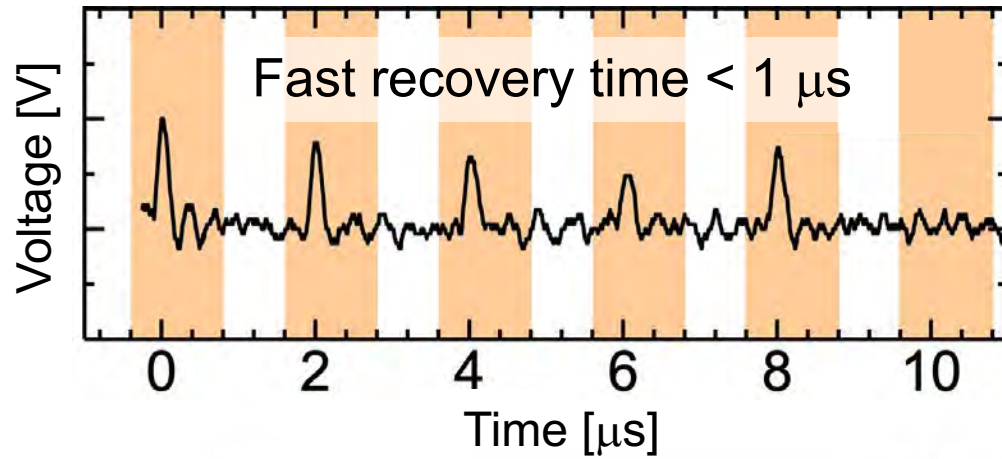


# Optical transition-edge sensors (TES)

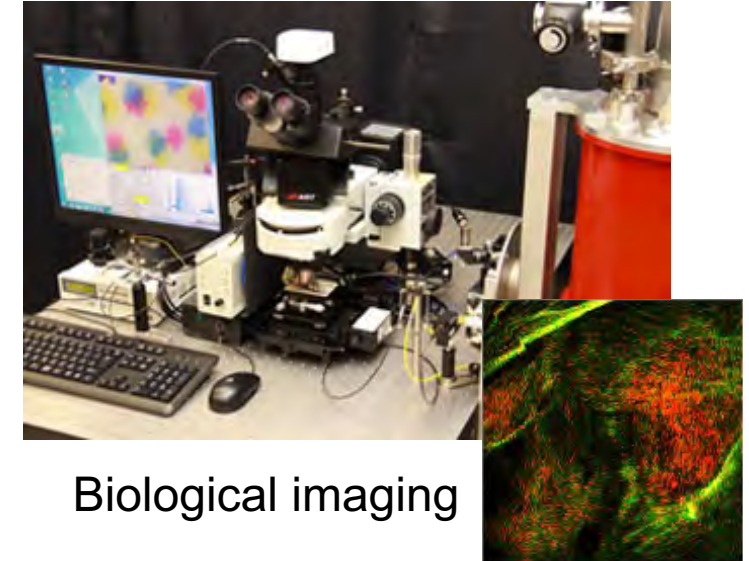


Repetition rate of pulsed laser : 500 kHz



Optical TESs

Scanning microscope with a TES



Biological imaging

- Ultra-low dark counts  
→ Proved biological imaging using a faint light source
- Fast detector response  
→ Suitable for quantum computing

We will start new projects using optical TESs at QUP!