

Hatobus Toures in Tokyo

はとバス観光

<http://www.hatobus.com/index.html>



With over a half century of experience introducing the beauty and history of Tokyo, the name Hato Bus has become synonymous with Tokyo tourism—offering visitors the most convenient and fun tours ever. Whether you are looking for the time-honored standbys—shrines, temples and Japanese gardens—or the more fashionable and trendy hot spots, Hato Bus Sightseeing Tours have exactly what you want! Hato bus offer tours accompanied by **English-speaking** and **Chinese-speaking guides**.

★Tours in English.

[A301] Tokyo Morning Tour 9:00 am –12:20 pm, Fare: 5,500 yen/ Adult , 2,900 yen / Child

See Meiji-jingu, Tokyo's most important shrine, followed by a visit to the East Gardens of the Imperial Palace (Mondays and Fridays, visit the Imperial Palace Nijubashi Bridge instead).

東京の3大観光名所——東京タワー、皇居、浅草——をしっかりと見たい、でも午後・夕方に予定がある……。そんな方にぴったり
の半日コースです

[A306] CITYRAMA Tokyo Morning 9:00am–13:00, Fare: Adult 5,000 yen, Child 2,700 yen

See Meiji-jingu, Tokyo's most important shrine, followed by a visit to the East Gardens of the Imperial Palace (Mondays and Fridays, visit the Imperial Palace Nijubashi Bridge instead).

東京随一の神社・明治神宮に参拝したあと、皇居の東御苑庭園を見学します。(月曜日、金曜日は東御苑に代わって皇居二重橋観光となります。)

[A302] Tokyo Afternoon 13:40–17:40, Fare: / Adult 5,500 yen, Child 2,900 yen

Enjoy a spectacular 360-degree view encompassing the lively streets of Tokyo and the beauty of Tokyo Bay, all from the Seaside Top, the observatory 151 meters high atop the World Trade Center Building, followed by a boat ride on the Sumida River, which flows north to south in the heart of Tokyo, to Asakusa.

世界貿易センタービルにある地上151mの「シーサイドトップ」展望台より、周囲360度に広がる東京の街並みと湾岸の景観、両方の展望を楽しんだあと、浅草と東京湾を結ぶ水上バスで隅田川クルーズを楽しみます。

[A321] Tokyo Skytree & Asakusa 13:40-19:20, Fare: Adult 6,600 yen, Child (4 years old ~) 3,700 yen

Drive by Tokyo's most renowned sites before sightseeing at Asakusa, and end with a dramatic and panoramic view of the city from its newest landmark, TOKYO SKYTREE(R).

東京の最新のランドマーク東京スカイツリー (R) のコースです。都内名所をドライブ、浅草を散策した後は東京スカイツリー天望デッキ (350m) にご案内します。(ご希望の方はツアーを離れて、東京スカイツリーをさらにゆっくり楽しめます。)



[A304] Dynamic Tokyo 9:00 am –17:10, Fare: Adult 12,000yen, Child 8,000yen

This popular tour includes visits to Tokyo's main sightseeing spots. It also gives you a chance to experience Japan's traditional culture through visits to the gardens at Happo-en and Chinzan-so, a tea ceremony demonstration, and a look at one of the best bonsai collections in Japan. Includes a Japanese-style barbecue lunch (vegetarian menu available).

東京の主要観光地を訪問するほか、「八芳園」と「椿山荘」という東京を代表する2つの日本庭園、日本茶のお手前体験、日本有数の盆栽コレクション観賞など、日本文化の真髄に触れる人気コースです。和風バーベキューの昼食付き (ベジタリアンの方もOK)。

[A315] **Panoramic Tokyo** 9:00 am –17:10, Fare: Adult 9,900 yen, Child 6,600 yen

See top sightseeing spots like Meiji-jingu Shrine, set in a vast forest in the city, and the Imperial Palace East Gardens, followed by lunch at the Pastel-tei observatory restaurant (vegetarian menu available) and a Symphony Cruise on Tokyo Bay

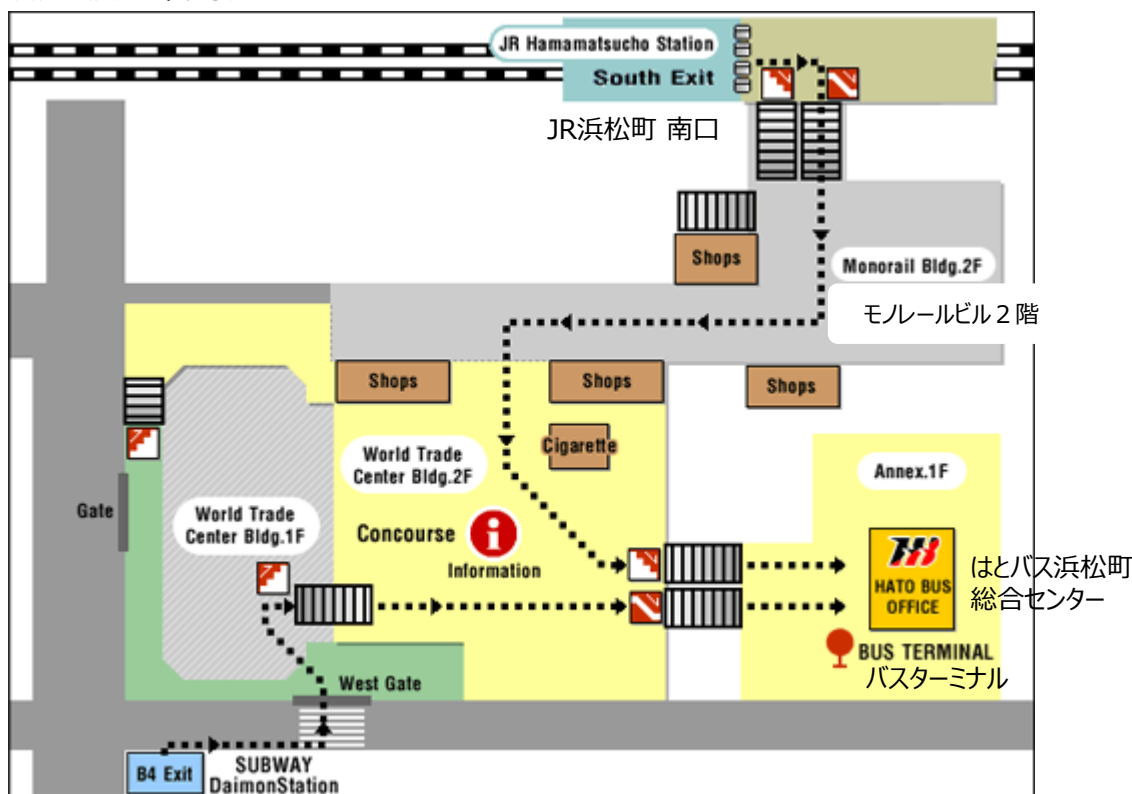
東京を代表する緑の環境である明治神宮と皇居東御苑を中心に東京の主な観光スポットを訪ねるとともに、「パステル亭」展望レストランでの昼食（ベジタリアンの方もOK）、そして東京湾での「シンフォニークルーズ」など楽しみ満載のコースです。

● **Access to Departure Point : Hamamatsu-cho Bus terminal**
出発場所は浜松町バスターミナル

From JR Hamamatsucho Station (About 10 min. from Akihabara)
Take JR Yamanote Line and get off the train at Hamamatsucho Station. Please proceed to the World Trade Center Building from the south exit (which is at the second floor) of the station and you will find the signboard to Bus Terminal. It takes only two minutes on foot.

JR浜松町駅からのアクセス方法;

浜松町駅「南口改札口」右手の「モノレール方面」階段を下り世界貿易センタービル本館2階コンコースへ。コンコースより別館1階バスターミナルへ下りてください。



● **Make a reservation 予約** : <http://www.hatobus.com/en/>

You can make a reservation directly from this site, or if you need information right away, please call us at 03-3435-6081 between 9:00am and 6:30pm. ネットが電話で申し込みをして下さい。

You can also join any tour at the last minute if seats are still available. Please call us beforehand and we can give you the most current information. 空席があれば当日の参加もできます。

● **Pay for the tour. 支払**

You can pay on the day of the tour. 乗車当日、はとバス浜松町センターにてお支払いください。

Please pay at the Hato Bus Hamamatsucho Office reception counter on the day of the tour. We accept both credit cards and cash. You can also pay for your ticket when you make a reservation at any of our Hato Bus branch offices.